



— *Novalties*

 **Kale**

# Index

*İçindekiler / Inhalt / Table des Matières*

ÇANAKKALE SERAMİK		KALEBODUR	
10	PATCHWOOD	106	HUED
14	DANTE	118	TERRAZZO
20	BEYAZ	122	SILVER STONE
26	SEMPRE	128	STROMBOLI
32	LUSTER	132	ZAIMUS
36	METROPOL	136	CEMENT 2.0
40	SALERNO	142	FABBRICA
44	LOGAN	146	ICON / İKON
48	DUNE	152	LUXURY CEMENT
52	PREMIUM	156	ROYAL MARBELS
56	FIJI STONE	172	ROYAL GALLERY
60	LINEAR	178	EXTRA WOOD
64	SMART	182	FOREST
68	SOLARIS	186	SOFT NORDIC
72	CLOUD	190	MEDITERRANO
76	SERPENTINE	194	PROVENZA
80	METRO	198	LOFT
84	MOONLIGHT	202	MOMENTUM
88	NAMUR	206	SOFT
92	NUXE	212	Technical Specifications
96	COUNTRY		<i>Teknik Özellikler</i>
100	WOOD		<i>Technische Spezifikationen</i>
			<i>Caractéristiques Techniques</i>



■ Çanakkale Seramik ■ Kalebodur





## Bringing new meanings to our living spaces

Since 1957, Kale has been producing high quality ceramics for the international markets. Our ambition has always been to bring new meanings to the way people live. We use our mastery of production, authenticity in design and excellence in service to transform physical surroundings into living spaces. We are passionate about providing creatively designed premium quality products to our customers . We have been in business for over 60 years, ever evolving and innovating what we do and how we do it. Never satisfied with the status quo, we will always move towards the future with an eye on what we can do better tomorrow. With our products reaching over 100 countries, we will continue to be an industry leader in Turkey, as well as a pioneer and a reliable partner around the world.

## Yaşam alanlarımıza yeni anlamlar katıyoruz

Kale, 1957 yılından bu yana uluslararası piyasaya yüksek kaliteli seramikler üretmektedir. Bu süre boyunca amacımız her zaman insanların yaşam stillerine yeni anlamlar getirmek olmuştur. İçinde yaşadığımız fiziksel çevreyi yaşam dolu alanlara dönüştürmek için üretimde ustalığımızı, tasarımda özgünlüğümüzü ve hizmette mükemmelliğimizi kullanıyoruz. İşimizdeki tutkumuz, müşterilerimize yaratıcı tasarımlara sahip üstün kaliteli ürünler sağlamak. 60 yılı aşkın bir süredir bulunduğumuz sektörde ortaya koyduğumuz her işi ve onu nasıl yapacağımızı sürekli geliştiriyor ve yeniliyoruz. Mevcut olanla asla yetinmeyip, yarın neyi daha iyi yapabileceğimizi düşünerek yönümüzü daima geleceğe doğru çevireceğiz. 100'ün üzerinde ülkeye ulaşan ürünlerimizle, Türkiye'de sektör lideri, dünya çapında da öncü ve güvenilir ortak olmaya devam edeceğiz.

## Neue Perspektiven für unsere Lebensbereiche schaffen

Seit 1957 stellt Kale hochwertige Keramik für den internationalen Märkten her. Das Ziel war es immer, neue Aspekte in die Lebensweise der Menschen einzubringen. Wir nutzen unsere Meisterschaft in der Produktion, die Authentizität im Design und die Exzellenz im Service, um die räumliche Umgebung in Lebensbereiche zu verwandeln. Es ist unsere Leidenschaft, unseren Kunden kreativ gestaltete Produkte höchster Qualität zu liefern. Wir sind seit über 60 Jahren im Geschäft und entwickeln und erneuern ständig, was wir tun und wie wir es tun. Wir sind niemals mit dem Status quo zufrieden, sondern streben weiterhin danach, was wir morgen besser machen können. Mit unseren Produkten, die in über 100 Ländern erhältlich sind, werden wir weiterhin ein Marktführer in der Türkei sowie ein Pionier und ein zuverlässiger Partner in der ganzen Welt sein.

## Donner de nouvelles définitions à nos espaces de vie

À partir de 1957, Kale fabrique des céramiques de haute qualité destinées aux marchés internationaux. Nous avons toujours eu pour ambition d'apporter de nouvelles significations à la façon dont les gens vivent. Nous mettons à profit notre maîtrise de la production, l'authenticité du design et l'excellence du service afin de transformer les environnements physiques en espaces de vie. Notre passion est de fournir à nos clients des produits de qualité supérieure conçus de manière créative. Nous avons plus de 60 ans d'existence, nous évoluons et innovons sans cesse dans nos activités et notre façon de faire. Nous ne nous contenterons jamais du statu quo, nous nous tournerons toujours vers l'avenir en gardant à l'esprit ce que nous pouvons faire de mieux demain. Grâce à la diffusion de nos produits dans plus de 100 pays, nous continuerons à être un leader du secteur en Turquie, ainsi qu'un pionnier et un partenaire fiable dans le monde entier.





■ **Çanakkale Seramik**

# Patchwood





**RM-6317R**  
29,5x89cm R / 11,8"x36" R  
Beige / Bej / Beige / Beige



**RM-6316R**  
29,5x89cm R / 11,8"x36" R  
Grey / Gri / Grau / Gris



**RM-6315R**  
29,5x89cm R / 11,8"x36" R  
Anthracite / Antrasit  
Anthrazit / Anthracite



**RM-6320R**  
29,5x89cm R / 11,8"x36" R  
Beige Dekor / Bej Dekor  
Beige Dekor / Décor Beige



**RM-6319R**  
29,5x89cm R / 11,8"x36" R  
Grey Dekor / Gri Dekor  
Grau Dekor / Décor Gris



**RM-6318R**  
29,5x89cm R / 11,8"x36" R  
Anthracite Dekor / Antrasit Dekor  
Anthrazit Dekor / Décor Anthracite

**Patchwood**

Codes / Kodlar / Codes / Codes

Color Renk Farbe Couleur	Surface Yüzey Oberfläche Surface	29,5x89cm 11 <sup>8</sup> "x36"	Decor / Dekor Dekor / Décor 29,5x89cm 11 <sup>8</sup> "x36"
Beige Bej Beige Beige	Matte Mat Matt Mat	RM-6317R	RM-6320R
Grey Gri Grau Gris	Matte Mat Matt Mat	RM-6316R	RM-6319R
Anthracite Antrasit Anthrazit Anthracite	Matte Mat Matt Mat	RM-6315R	RM-6318R



# Dante





**MAS-8781**  
White  
Beyaz  
Weiß  
Blanc  
29x59cm R / 11,4"x23,2" R  
30x60cm / 12"x24"



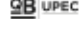


**MAS-8780**  
Grey  
Gri  
Grau  
Gris  
29x59cm R / 11,4"x23,2" R  
30x60cm / 12"x24"



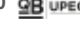


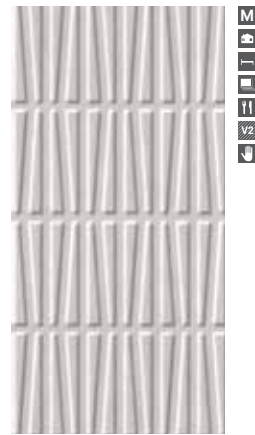
**MAS-8782**  
Anthracite  
Antrasit  
Anthrazit  
Anthracite  
29x59cm R / 11,4"x23,2" R  
30x60cm / 12"x24"



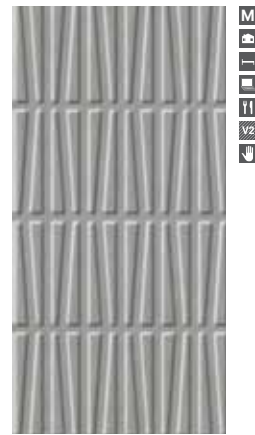
**GS-D7197**  
**GS-D8365**  UPEC  
**GS-D6967**  UPEC  
**GS-D7101**  UPEC  
White  
Beyaz  
Weiß  
Blanc  
59x59cm R / 23,2"x23,2" R  
60x60cm / 24"x24"  
45x45cm / 18"x18"  
30x60cm / 12"x24"



**GS-D7196**  
**GS-D8366**  UPEC  
**GS-D6966**  UPEC  
**GS-D7100**  UPEC  
Grey  
Gri  
Grau  
Gris  
59x59cm R / 23,2"x23,2" R  
60x60cm / 24"x24"  
45x45cm / 18"x18"  
30x60cm / 12"x24"



**RM-8784**  
White Dekor  
Beyaz Dekor  
Weiß Dekor  
Décor Blanc  
29x59cm R / 11,4"x23,2" R  
30x60cm / 12"x24"



**RM-8783**  
Grey Dekor  
Mix Dekor  
Grau Dekor  
Décor Gris  
29x59cm R / 11,4"x23,2" R  
30x60cm / 12"x24"



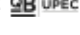


**RM-8785**  
Anthracite Dekor  
Antrasit Dekor  
Anthrazitfarbenes Dekor  
Décor Anthracite  
29x59cm R / 11,4"x23,2" R  
30x60cm / 12"x24"



**RM-8786**  
Mix Dekor  
Mix Dekor  
Mix Dekor  
Décor Mixte  
29x59cm R / 11,4"x23,2" R  
30x60cm / 12"x24"



**GS-D7198**  
**GS-D8367**  UPEC  
**GS-D6968**  UPEC  
**GS-D7102**  UPEC  
Anthracite  
Antrasit  
Anthrazit  
Anthracite  
59x59cm R / 23,2"x23,2" R  
60x60cm / 24"x24"  
45x45cm / 18"x18"  
30x60cm / 12"x24"



## Dante

Codes / Kodlar / Codes / Codes

Color Renk Farbe Couleur	Surface Yüzey Oberfläche Surface	60x60cm	30x60cm	45x45cm
		24"x24"	12"x24"	18"x18"
<b>White</b> Beyaz Weiß Blanc	<b>Matte</b> Mat Matt Mat	GS-D7197 GS-D8365 (UPEC) GS-D7197R	MAS-8781 GS-D7101 (UPEC) MAS-8781R	GS-D6967 (UPEC)
<b>Grey</b> Gri Grau Gris	<b>Matte</b> Mat Matt Mat	GS-D7196 GS-D8366 (UPEC) GS-D7196R	MAS-8780 GS-D7100 (UPEC) MAS-8780R	GS-D6966 (UPEC)
<b>Anthracite</b> Antrasit Anthrazit Anthracite	<b>Matte</b> Mat Matt Mat	GS-D7198 GS-D8367 (UPEC) GS-D7198R	MAS-8782 GS-D7102 (UPEC) MAS-8782R	GS-D6968 (UPEC)
<b>White Decor</b> Beyaz Dekor Weiß Dekor Décor Blanc	<b>Matte</b> Mat Matt Mat	—	RM-8784 RM-8784R	—
<b>Grey Decor</b> Gri Dekor Grau Dekor Décor Gris	<b>Matte</b> Mat Matt Mat	—	RM-8783 RM-8783R	—
<b>Anthracite Decor</b> Antrasit Dekor Anthrazitfarbenes Dekor Décor Anthracite	<b>Matte</b> Mat Matt Mat	—	RM-8785 RM-8785R	—
<b>Mix Decor</b> Mix Dekor Mix Dekor Décor Mixte	<b>Matte</b> Mat Matt Mat	—	RM-8786 RM-8786R	—



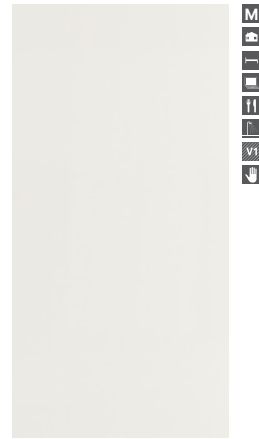


# White Beyaz





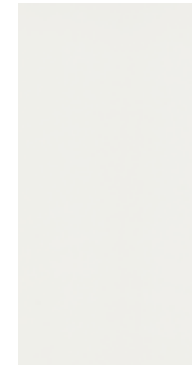
**FON-7113** / 25x75cm / 10"x30"  
**FON-7113 R** / 25x75cm R / 10"x30" R  
**8205** / 30x60cm / 11<sup>8</sup>"x24"  
**8205 R** / 29x59cm R / 11<sup>8</sup>"x24" R  
**6005 R** / 29,5x89cm R / 11<sup>8</sup>"x36" R  
 Super White / Süper Beyaz  
 Superweiß / Super Blanc



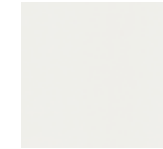
**MAT - 9901** / 25x40cm / 10"x15,5"  
**MAT - 7202** / 25x75cm / 10"x30"  
**MAT - 7202 R** / 24x74cm R / 10"x30" R  
**MAT - 8735 R** / 29x59cm R / 11<sup>8</sup>"x24" R  
 Super Matt White / Süper Mat Beyaz  
 Super Matt Weiß / Super Mat Blanc



**9602** / 20x50cm / 10"x20"  
**9505** / 25x40cm / 10"x15,5"  
 Opaque White / Opak Beyaz  
 Opak Weiß / Opaque Blanc



**9701** / 25x50cm / 10"x20"  
 Glossy White / Parlak Beyaz  
 Hell Weiß / Poli Blanc



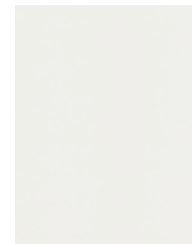
**3401**  
 20x20cm / 7<sup>8</sup>"x7<sup>8</sup>"  
 Relief White / Rölyef Beyaz  
 Poliert Weiß / Poli Blanc



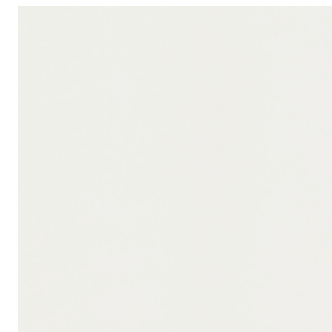
**5225** / 25x33cm / 10"x13"  
**3225** / 20x20cm / 7<sup>8</sup>"x7,8"  
**4225** / 20x25cm / 7<sup>8</sup>"x10"  
 White / Beyaz / Weiß / Blanc



**MAT - 9702** / 25x50cm / 10"x20"  
**MAT - 3901** / 20x20cm / 7<sup>8</sup>"x7,8"  
**MAT - 8500** / 30x60cm / 11<sup>8</sup>"x24"  
**MAT - 8500R** / 29x59cm R  
**6006 R** / 29,5x89cm R / 11<sup>8</sup>"x36" R  
 Matt White / Mat Beyaz  
 Matt Weiß / Mat Blanc



**9405** / 25x40cm / 10"x15,5"  
**5445** / 25x33cm / 10"x13"  
**4405** / 20x25cm / 7<sup>8</sup>"x10"  
 Relief Super White / Rölyef Süper Beyaz  
 Poliert Superweiß / Poli Super Blanc



**A-6140** / 45x45cm / 18"x18"  
**GS-D4850** / 33x33cm / 13"x13"  
 White / Beyaz / Weiß / Blanc

## White / Beyaz



### White / Beyaz

Codes / Kodlar / Codes / Codes						
Color / Renk Farbe / Couleur	Surface	25x75cm 10"x30"	45x45cm 18"x18"	30x90cm 11"x36"	30x60cm 11"x24"	33x33cm 13"x13"
	Yüzeý Oberfläche Surface					
Super White Süper Beyaz Superweiß Super Blanc	Matte / Mat Matt / Mat	—	—	—	—	—
	Polished / Parlak Hell / Poli	FON-7113 FON-7113 R	—	—	8586 R 8205 R	—
					8205 MAT-8735 R MAT-8500 R	—
Super Matt White Süper Mat Beyaz Super Matt Weiß Super Mat Blanc	Matte / Mat Matt / Mat	MAT-7202 MAT-7202 R	—	—	—	—
	Polished / Parlak Hell / Poli	—	—	6005 R	—	—
White Beyaz Weiß Blanc	Matte / Mat Matt / Mat	—	A-6140	6006 R	—	GS-D4850
	Polished / Parlak Hell / Poli	—	—	—	—	—

## White / Beyaz

Codes / Kodlar /  
Codes / Codes

Color / Renk Farbe / Couleur	Surface	25x50cm 9"x19"	25x40cm 9"x15"	25x33cm 10"x13"	20x50cm 8"x19"	20x25cm 8"x9"	20x20cm 8"x8"
	Yüzeý Oberfläche Surface						
Super Matt White Süper Mat Beyaz	Matte / Mat Matt / Mat	—	MAT-9901	—	—	—	—
Super Matt Weiß Super Mat Blanc	Polished / Parlak Hell / Poli	—	—	—	—	—	—
White Beyaz Weiß Blanc	Matte / Mat Matt / Mat	MAT-9702	—	—	—	—	MAT-3901
	Polished / Parlak Hell / Poli	9701	—	5225	—	4225	3225
Relief White Rölyef Beyaz Poliert Weiß Poli Blanc	Matte / Mat Matt / Mat	—	—	—	—	—	3401
	Polished / Parlak Hell / Poli	—	—	—	—	—	—
Relief Super White Rölyef Süper Beyaz Poliert Superweiß Poli Super Blanc	Matte / Mat Matt / Mat	—	—	—	—	—	—
	Polished / Parlak Hell / Poli	—	9405	5445	—	4405	—
Opaque White Opak Beyaz Opak Weiß Opaque Blanc	Matte / Mat Matt / Mat	—	—	—	—	—	—
	Polished / Parlak Hell / Poli	—	9505	—	9602	—	—









**FON-7130**  
25x75cm / 10"x30"  
24x74cm R / 10"x30"  
20x50cm / 7<sup>7/8</sup>"x20"  
White  
Beyaz  
Weiß  
Blanc



**FON-7131**  
25x75cm / 10"x30"  
Black  
Siyah  
Schwarz  
Noir



**RP-7133**  
25x75cm / 10"x30"  
White Geometric  
Beyaz Geometrik  
Weiß Geometrisch  
Géométrique Blanc



**RP-7134**  
25x75cm / 10"x30"  
Black Geometric  
Siyah Geometrik  
Schwarz Geometrisch  
Géométrique Noir



**RP-7132**  
25x75cm / 10"x30"  
Hexagon Decor  
Hexagon Dekor  
Sechseck-Dekor  
Décor Hexagone



**GS-D6945**  
45x45cm / 18"x18"  
White  
Beyaz  
Weiß  
Blanc



**GS-D6946**  
45x45cm / 18"x18"  
Black  
Siyah  
Schwarz /  
Noir

## Sempre

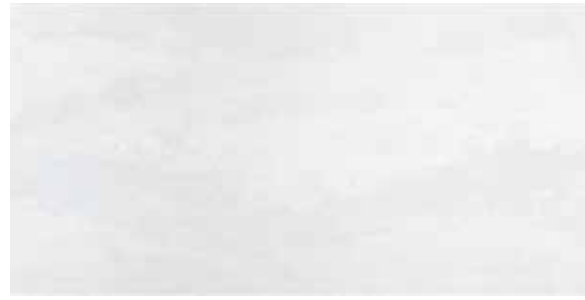
Codes / Kodlar / Codes / Codes

Color	Surface	45x45cm	33x33cm	25x75cm	20x50cm
Renk	Yüzey	18"x18"	13"x13"	10"x30"	7 <sup>8</sup> "x20"
Farbe	Oberfläche				
Couleur	Surface				
White	Matte / Mat	—	GS-D4869	—	—
Beyaz	Matt / Mat				
Weiß	Glossy / Parlak	GS-D6945	—	FON-7130	FON-9175
Blanc	Poliert / Poli			FON-7130R	
Black	Glossy	GS-D6946	—	FON-7131	—
Siyah	Parlak				
Schwarz /	Poliert				
Noir	Poli				
White Geometric	Glossy	—	—	RP-7133	—
Beyaz Geometrik	Parlak				
Weiß Geometrisch	Poliert				
Géométrique Blanc	Poli				
Black Geometric	Glossy	—	—	RP-7134	—
Siyah Geometrik	Parlak				
Schwarz Geometrisch	Poliert				
Géométrique Noir	Poli				
Hexagon Decor	Glossy	—	—	RP-7132	—
Hexagon Dekor	Parlak				
Sechseck-Dekor	Poliert				
Décor Hexagone	Poli				



# Luster





**MAS-8220** / 30x60cm / 12"x24"  
White / Beyaz / Weiß / Blanc



### Luster

Codes / Kodlar / Codes / Codes

Color	Surface	
Renk	Yüzey	
Farbe	Oberfläche	<b>30x60cm</b>
Couleur	Surface	12"x24"
White	Matte	
Beyaz	Mat	MAS-8220
Weiß	Matt	
Blanc	Mat	



# Metropol





**MAS-8421 R / MAS-8421**  
30x60cm / 12"x24"  
29x59cm R / 12"x24" R  
Light Grey  
Açık Gri  
Hellgrau  
Gris Clair



**MAS-8420 R / MAS-8420**  
30x60cm / 12"x24"  
29x59cm R / 12"x24" R  
Grey  
Gri  
Grau  
Gris



**RM-8423 R / RM-8423**  
30x60cm / 12"x24"  
29x59cm R / 12"x24" R  
Light Grey Dekor  
Açık Gri Dekor  
Hellgrau Dekor  
Gris Clair Décor



**RM-8422 R / RM-8422**  
30x60cm / 12"x24"  
29x59cm R / 12"x24" R  
Grey Dekor  
Gri Dekor  
Grau Dekor  
Gris Décor



**GS-D7691 / GS-D7691 R / GS-D6921**  
60x60cm / 24"x24"  
59x59cm R / 23,2"x23,2" R  
45x45cm / 18"x18"  
Light Grey / Açık Gri / Hellgrau / Gris Clair



**GS-D7690 / GS-D7690 R / GS-D6920**  
60x60cm / 24"x24"  
59x59cm R / 23,2"x23,2" R  
45x45cm / 18"x18"  
Grey / Gri / Grau / Gris

## Metropol

Codes / Kodlar / Codes / Codes

Color Renk Farbe Couleur	Surface Yüze Oberfläche Surface	60x60cm 24"x24"	30x60cm 12"x24"	45x45cm 18"x18"	Decor / Dekor Dekor / Décor 30x60cm 12"x24"	Slip Resistance Kaymazlık Gleitwiderstand Antidérapant
Light Grey Açık Gri Hellgrau Grisaille	Mat Matte Matt Mat	GS-D7691	MAS-8421 MAS-8421 R	GS-D6552	RM-8421	—
Grey Gri Grau Gris	Mat Matte Matt Mat	GS-D7690	MAS-8420 MAS-8420 R	GS-D6553	RM-84232	—
Beige Bej Beige Beige	Mat Matte Matt Mat	—	MAS-8421	GS-D6554	—	—
Light Grey Dekor Açık Gri Dekor Hellgrau Dekor Gris Clair Décor	Mat Matte Matt Mat	—	RM-8423 RM-8423 R	—	—	—
Grey Dekor Gri Dekor Grau Dekor Gris Décor	Mat Matte Matt Mat	—	RM-8422 RM-8422 R	—	—	—

# Salerno







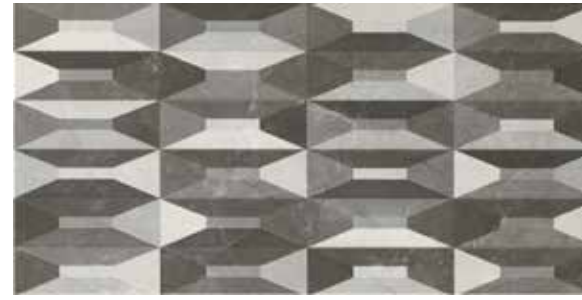
# Logan







**FON-8451** / 30x60cm / 12"x24"  
Gri / Grey / Grau / Gris



**RP-8453** / 30x60cm / 12"x24"  
Decor / Dekor / Dekor / Décor



**FON-8450**  
Beyaz / White / Weiß / Blanc  
30x60cm / 12"x24"



**GS-D6935** / 45x45cm / 18"x18"  
White / Beyaz / Weiß / Blanc

## Logan

Codes / Kodlar / Codes / Codes

Color Renk Farbe Couleur	Surface Yüzey Oberfläche Surface	Size		Slip Resistance Kaymazlık Gleitwiderstand Antidérapant
		45x45cm 18"x18"	30x60cm 12"x24"	
<b>White</b> Beyaz Weiß Blanc	<b>Polished</b> Parlak Hell Poli	GS-D6935	FON-8450	—
<b>Grey</b> Gri Grau Gris	<b>Polished</b> Parlak Hell Poli	—	FON-8451	—
<b>Decor</b> Dekor Dekor Décor	<b>Polished</b> Parlak Hell Poli	—	RP-8453	—





**GS-D7489** - 30x60cm / 12"x24"  
White / Beyaz / Weiß / Blanc

## Dune

Codes / Kodlar / Codes / Codes

Color Renk Farbe Couleur	Surface Yüzey Oberfläche Surface	30x60cm 12"x24"
<b>White</b> Beyaz Weiß Blanc	<b>Matte</b> Mat Matt Mat	GS-D7489
<b>Ice White</b> Buz Beyaz Eisweiß Blanc Glace	<b>Matte</b> Mat Matt Mat	—
<b>Grey</b> Gri Grau Gris	<b>Matte</b> Mat Matt Mat	—
<b>Taupe</b> Taupe Graubraun Gris Brun	<b>Matte</b> Mat Matt Mat	GS-D7490
<b>Beige</b> Bej Beige Beige	<b>Matte</b> Mat Matt Mat	—





# Premium

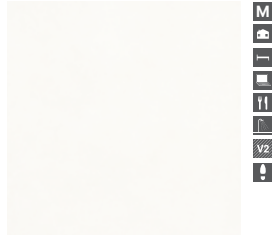
Premium



**GS-D4632**  
33x33cm / 13"x13"  
Grey / Gri / Grau / Gris



**GS-D4631**  
33x33cm / 13"x13"  
Beige / Bej / Beige / Beige



**GS-D4630**  
33x33cm / 13"x13"  
Cream / Krem / Creme / Crème



**GS-D4633**  
33x33cm / 13"x13"  
Anthracite / Antrasit / Anthrazit / Anthracite



**GS-D7312** / 30x60cm / 12"x24"  
Anthracite / Antrasit  
Anthrazit / Anthracite

Premium

Codes / Kodlar / Codes / Codes

Color Renk Farbe Couleur	Surface Yüzey Oberfläche Surface	30x60cm 12"x24"	33x33cm 13"x13"	Slip Resistance Kaymazlık Gleitwiderstand Antidérapant
Beige Bej Beige Beige	Matte Mat Matt Mat	—	GS-D4631	—
Grey Gri Grau Gris	Matte Mat Matt Mat	—	GS-D4632	—
Cream Krem Creme Crème	Matte Mat Matt Mat	—	GS-D4630	—
Anthracite Antrasit Anthrazit Anthracite	Matte Mat Matt Mat	GS-D7312	GS-D4633	—

# Fiji Stone







**MAS-9200** / 25x40cm / 10"x15"  
White / Beyaz / Weiß / Blanc



**MAS-9201** / 25x40cm / 10"x15"  
Grey / Gri / Grau / Gris



**RM-8110** / 30x60cm / 12"x24"  
Mosaic Decor White  
Mozaik Dekor Beyaz  
Mozaik Dekor Weiß  
Mosaïque Décor Blanc



**Fiji Stone**

Codes / Kodlar / Codes / Codes

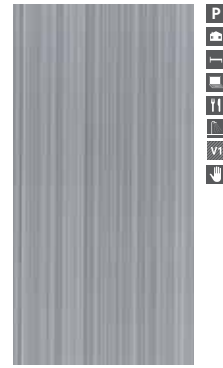
Color	Surface		
Renk	Yüzey		
Farbe	Oberfläche	<b>30x60cm</b>	<b>25x40cm</b>
Couleur	Surface	12"x24"	10"x15"
<b>White</b>	<b>Matte</b>		
Beyaz	Mat	—	MAS-9200
Weiß	Matt		
Blanc	Mat		
<b>Grey</b>	<b>Matte</b>		
Gri	Mat	—	MAS-9201
Grau	Matt		
Gris	Mat		
<b>Mosaic Decor White</b>	<b>Matte</b>		
Mozaik Dekor Beyaz	Mat	RM-8110	—
Mozaik Dekor Weiß	Matt		
Mosaïque Décor Blanc	Mat		

# Linear





**FON-1240**  
 25x50cm / 9<sup>8</sup>”x19<sup>6</sup>”  
 White  
 Beyaz  
 Weiß  
 Blanc



**FON-1241**  
 25x50cm / 9<sup>8</sup>”x19<sup>6</sup>”  
 Grey  
 Gri  
 Grau  
 Gris



**Linear**

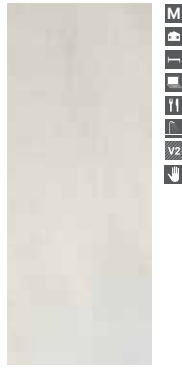
Codes / Kodlar / Codes / Codes

Color	Surface	
Renk	Yüzey	
Farbe	Oberfläche	<b>25x50cm</b>
Couleur	Surface	9 <sup>8</sup> ”x19 <sup>6</sup> ”
<b>White</b>	<b>Polished</b>	
Beyaz	Parlak	FON-1240
Weiß	Hell	
Blanc	Poli	
<b>Grey</b>	<b>Polished</b>	
Gri	Parlak	FON-1241
Grau	Hell	
Gris	Poli	





Smart



**RM-9128** / 20x50cm / 7<sup>7/8</sup>"x19,6"  
White  
Beyaz  
Weiß  
Blanc



**RM-9129** / 20x50cm / 7<sup>7/8</sup>"x19,6"  
Cream  
Krem  
Crème



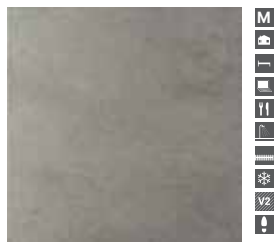
**RM-9130** / 20x50cm / 7<sup>7/8</sup>"x19,6"  
Grey  
Gri  
Grau  
Gris



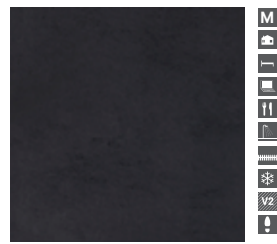
**RM-9131** / 20x50cm / 7<sup>7/8</sup>"x19,6"  
Brown  
Kahve  
Braun  
Brun



**RM-9132** / 20x50cm / 7<sup>7/8</sup>"x19,6"  
Black  
Siyah  
Schwarz  
Noir



**D-4778** / 33x33cm / 13"x13"  
Grey  
Gri  
Grau  
Gris



**D-4780** / 33x33cm / 13"x13"  
Black  
Siyah  
Schwarz  
Noir



**CAM-678** / 8x50cm / 3"x19,6"  
Geometric Border Grey  
Geometrik Bordür Gri  
Geometrisch Bordüren Grau  
Géométrique Bordüres Gris

Smart

Codes / Kodlar / Codes / Codes

Color Renk Farbe Couleur	Surface Yüzey Oberfläche Surface	45x45cm 18"x18"	33x33cm 13"x13"	20x50cm 7 <sup>7/8</sup> "x20"	8x50cm 3"x20"
White Beyaz Weiß Blanc	Matte Mat Matt Mat	—	—	RM-9128	—
Cream Krem Crème	Matte Mat Matt Mat	—	—	RM-9129	—
Grey Gri Grau Gris	Matte Mat Matt Mat	GS-N6051	D-4778	RM-9130	—
Brown Kahve Braun Brun	Matte Mat Matt Mat	—	—	RM-9131	—
Black Siyah Schwarz Noir	Matte Mat Matt Mat	—	D-4780	RM-9132	—
Geometric Border Grey Geometrik Bordür Gri Geometrisch Bordüren Grau Géométrique Bordüres Gris	Polished Parlak Poliert Poli	—	—	—	CAM-678

# Solaris







**MAT-9412** / 20x50cm / 8"x19"  
White / Beyaz / Weiß / Blanc



**MAT-9413** / 20x50cm / 8"x19"  
Cream / Krem / Creme / Crème

## Solaris

Codes / Kodlar / Codes / Codes

Color Renk Farbe Couleur	Surface Yüzey Oberfläche Surface	20x50cm 8"x19"	Slip Resistance Kaymazlık Gleitwiderstand Antidérapant
White Beyaz Weiß Blanc	Matte Mat Matt Mat	MAT-9412	—
Cream Krem Creme Crème	Matte Mat Matt Mat	MAT-9413	—

# Cloud





**FON-9286** / 25x40cm / 9,84"x15,7"  
 Grey  
 Gri  
 Grau  
 Gris



**FON-9287** / 25x40cm / 9,84"x15,7"  
 White  
 Beyaz  
 Weiß  
 Blanc



**FON-9288** / 25x40cm / 9,84"x15,7"  
 Beige  
 Bej  
 Beige  
 Beige



**Cloud**

Codes / Kodlar / Codes / Codes

Color	Surface	
Renk	Yüzey	
Farbe	Oberfläche	<b>25x40cm</b>
Couleur	Surface	9,84"x15,7"
<b>Grey</b>	<b>Glossy</b>	
Gri	Parlak	FON-9286
Grau	Poliert	
Gris	Poli	
<b>White</b>	<b>Glossy</b>	
Beyaz	Parlak	FON-9287
Weiß	Poliert	
Blanc	Poli	
<b>Beige</b>	<b>Glossy</b>	
Bej	Parlak	FON-9288
Beige	Poliert	
Beige	Poli	



# Serpentine





**FON-4814 S** / 20x25cm / 7<sup>7/8</sup>"x10"

White  
Beyaz  
Weiß  
Blanc



**D-4962** / 33x33cm / 13"x13"

Cream  
Krem  
Crème  
Crème

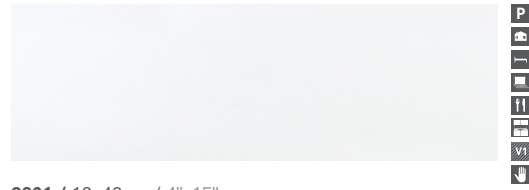
**Serpentine**

Codes / Kodlar / Codes / Codes

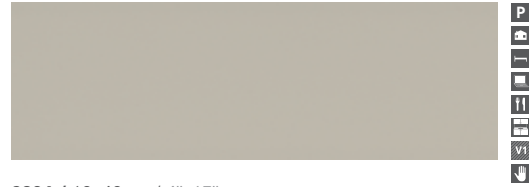
Color	Surface			Slip Resistance
Renk	Yüzey			Kaymazlık
Farbe	Oberfläche	<b>33x33cm</b>	<b>20x25cm</b>	Gleitwiderstand
Couleur	Surface	13"x13"	7 <sup>7/8</sup> "x10"	Antidérapant
<b>White</b>	<b>Glossy</b>			
Beyaz	Parlak	D-4961	FON-4814	
Weiß	Poliert			
Blanc	Poli			
<b>Grey</b>	<b>Glossy</b>			
Gri	Parlak	—	FON-4816	
Grau	Poliert			
Gris	Poli			
<b>Cream</b>	<b>Glossy</b>			
Krem	Parlak	D-4962	—	
Crème	Poliert			
Crème	Poli			







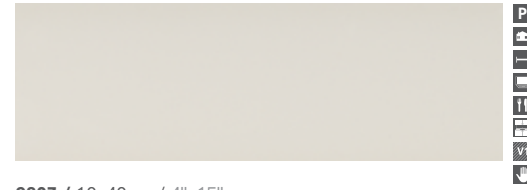
**9801 / 10x40cm / 4"x15"**  
White Glossy / Beyaz Parlak  
Weiß Hell / Blan Poli



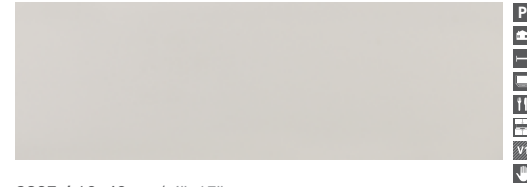
**9804 / 10x40cm / 4"x15"**  
Linen Polished / Linen Parlak  
Linnen Hell / Linge Poli



**9806 / 10x40cm / 4"x15"**  
Taupe Glossy / Taupe Parlak  
Graubraun Hell / Gris Brun



**9803 / 10x40cm / 4"x15"**  
Biscuit Glossy / Bisküvi Parlak  
Biskuit Hell / Biscuit Poli



**9805 / 10x40cm / 4"x15"**  
Grey Glossy / Gri Parlak  
Grau Hell / Gris Poli



**9808 / 10x40cm / 4"x15"**  
Black Glossy / Siyah Parlak  
Schwarz Hell / Noir Poli

## Metro

Codes / Kodlar / Codes / Codes

Color Renk Farbe Couleur	Surface Yüzey Oberfläche Surface	10x40cm 4"x15"
<b>White Glossy</b> Beyaz Parlak Weiß Hell Blan Poli	<b>Matte</b> Mat Matt Mat	<b>9801</b>
<b>Biscuit Glossy</b> Bisküvi Parlak Biskuit Hell Biscuit Poli	<b>Matte</b> Mat Matt Mat	<b>9803</b>
<b>Linen Glossy</b> Linen Parlak Linnen Hell Linge Poli	<b>Matte</b> Mat Matt Mat	<b>9804</b>
<b>Grey Glossy</b> Gri Parlak Grau Hell Gris Poli	<b>Matte</b> Mat Matt Mat	<b>9805</b>
<b>Taupe Glossy</b> Taupe Parlak Graubraun Hell Gris Brun Poli	<b>Matte</b> Mat Matt Mat	<b>9806</b>
<b>Black Glossy</b> Siyah Parlak Schwarz Hell Noir Poli	<b>Matte</b> Mat Matt Mat	<b>9808</b>

# Moonlight







RP-9810 / 10x40cm / 3"x15"  
 RP-9830 / 10x30cm / 3"x12"  
 White / Beyaz / Weiß / Blanc



RP-9811 / 10x40cm / 3"x15"  
 RP-9831 / 10x30cm / 3"x12"  
 Grey / Gri / Grau / Gris



RP-9812 / 10x40cm / 3"x15"  
 RP-9832 / 10x30cm / 3"x12"  
 Baby Blue / Açık Mavi  
 Hellblau / Bleu Clair



RP-9813 / 10x40cm / 3"x15"  
 RP-9833 / 10x30cm / 3"x12"  
 Dark Blue / Koyu Mavi  
 Dunkelblau / Bleu Foncé



RP-9814 / 10x40cm / 3"x15"  
 RP-9834 / 10x30cm / 3"x12"  
 Green / Yeşil  
 Grün / Vert

## Moonlight

Codes / Kodlar / Codes / Codes

Color Renk Farbe Couleur	Surface Yüzey Oberfläche Surface	10x40cm 4"x15"	10x30cm 4"x12"
<b>White</b> Beyaz Weiß Blanc	<b>Matte</b> Mat Matt Mat	RP-9810	RP-9830
<b>Grey</b> Gri Grau Gris	<b>Matte</b> Mat Matt Mat	RP-9811	RP-9831
<b>Baby Blue</b> Açık Mavi Hellblau Bleu Clair	<b>Matte</b> Mat Matt Mat	RP-9812	RP-9832
<b>Dark Blue</b> Koyu Mavi Dunkelblau Bleu Foncé	<b>Matte</b> Mat Matt Mat	RP-9813	RP-9833
<b>Green</b> Yeşil Grün Vert	<b>Matte</b> Mat Matt Mat	RP-9814	RP-9834



# Namur





**GS-N8023** / 60x60cm / 24"x24"  
Grey / Gri / Grau / Gris



**GS-N6134** / 45x45cm / 18"x18"  
Anthracite / Antrasit / Anthrazit / Anthracite

**Namur**

Codes / Kodlar / Codes / Codes

Color	Surface	60x60cm	45x45cm	Slip Resistance
Renk	Yüzey			Kaymazlık
Farbe	Oberfläche			Gleitwiderstand
Couleur	Surface	24"x24"	18"x18"	Antidérapant
Grey	Matte			
Gri	Mat	GS-N8023	—	R9
Grau	Matt			
Gris	Mat			
Anthracite	Matte			
Antrasit	Mat	—	GS-N6134	R9
Anthrazit	Matt			
Anthracite	Mat			







GS-D7877R / 59x59cm R / 24"x24" R UPEC  
 GS-D6877 / 45x45cm / 18"x18" UPEC  
 GS-D4768 / 33x33cm / 13"x13" UPEC  
 GS-7108 / 30x60cm / 11 8"x24" UPEC  
 White / Beyaz / Weiß / Blanc



GS-D7879R / 59x59cm R / 24"x24" R UPEC  
 GS-D6880 / 45x45cm / 18"x18" UPEC  
 GS-D4771 / 33x33cm / 13"x13" UPEC  
 GS-7110 / 30x60cm / 11 8"x24" UPEC  
 Grey / Gri / Grau / Gris



GS-D7880R / 59x59cm R / 24"x24" R UPEC  
 GS-D6879 / 45x45cm / 18"x18" UPEC  
 GS-D4770 / 33x33cm / 13"x13" UPEC  
 GS-7111 / 30x60cm / 11 8"x24" UPEC  
 Koyu Gri / Dark Grey / Dunkelgrau / Gris Foncé



GS-D7878R / 59x59cm R / 24"x24" R UPEC  
 GS-D6878 / 45x45cm / 18"x18" UPEC  
 GS-D4769 / 33x33cm / 13"x13" UPEC  
 GS-7109 / 30x60cm / 11 8"x24" UPEC  
 Kum / Sand / Sand / Sable

Nuxe

Codes / Kodlar / Codes / Codes

Color	Surface	59x59cm R	45x45cm	33x33cm	30x60cm	8x60cm	8x45cm	8x33cm
Renk	Yüzey	24"x24" R	18"x18"	13"x13"	11 8"x24"	3 9"x24"	3 9"x18"	3 9"x13 1/5"
Farbe	Oberfläche							
Couleur	Surface							
<b>White</b>	<b>Matte</b>							
Beyaz	Mat	GS-D7877R	GS-D6877	GS-D4768	GS-D7108	—	—	GS-O7757
Weiß	Matt	(UPEC)	(UPEC)	(UPEC)	(UPEC)			
Blanc	Mat							
<b>Sand</b>	<b>Matte</b>							
Kum	Mat	GS-D7878R	GS-D6878	GS-D4769	GS-D7109	GS-O7767	GS-O7764	GS-O7758
Sand	Matt	(UPEC)	(UPEC)	(UPEC)	(UPEC)		SD-802	
Sable	Mat							
<b>Grey</b>	<b>Matte</b>							
Gri	Mat	GS-D7879R	GS-D6880	GS-D4771	GS-D7110	—	GS-O7765	—
Grau	Matt	(UPEC)	(UPEC)	(UPEC)	(UPEC)		SD-804	
Gris	Mat							
<b>Dark Grey</b>	<b>Matte</b>							
Koyu Gri	Mat	GS-D7880R	GS-D6879	GS-D4770	GS-D7111	GS-O7769	GS-O7766	GS-O7762
Dunkel Grau	Matt	(UPEC)	(UPEC)	(UPEC)	(UPEC)		SD-803	
Gris Foncé	Mat							

# Country







**GS-N5004** / 15x60cm / 6"x23<sup>5</sup>"

Honey  
Bal  
Honig  
Miel



**GS-N5005** / 15x90cm / 6"x36"

Khaki  
Haki  
Erdfarbe  
Kaki



**GS-N5006** / 15x90cm / 6"x36"

Hazelnut  
Findik  
Nuss  
Noisette

**Country**

Codes / Kodlar / Codes / Codes

Color Renk Farbe Couleur	Surface Yüzey Oberfläche Surface	15x90cm 6"x36"	Slip Resistance Kaymazlık Gleitwiderstand Antidérapant
Honey Bal Honig Miel	Matte Mat Matt Mat	GS-N5004	—
Khaki Haki Erdfarbe Kaki	Matte Mat Matt Mat	GS-N5005	—
Hazelnut Findik Nuss Noisette	Matte Mat Matt Mat	GS-N5006	—



# Wood



Wood



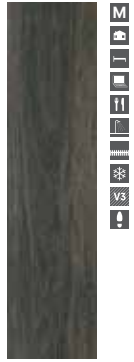
**GS-N3000**  
15x60cm / 6"x24"  
Beige / Bej / Beige / Beige



**GS-N3001**  
15x60cm / 6"x24"  
Oak / Meşe / Eiche / Chêne



**GS-N3002**  
15x60cm / 6"x24"  
Walnut / Ceviz  
Walnuss / Noyer



**GS-N3003**  
15x60cm / 6"x24"  
Ebony / Abanoz  
Ebenholz / Ébène

Wood

Codes / Kodlar / Codes / Codes

Color Renk Farbe Couleur	Surface Yüzey Oberfläche Surface	15x60cm 6"x24"	Slip Resistance Kaymazlık Gleitwiderstand Antidérapant
Beige Bej Beige Beige	Matte Mat Matt Mat	GS-N3000	R9
Oak Meşe Eiche Chêne	Matte Mat Matt Mat	GS-N3001	R9
Walnut Ceviz Walnuss Noyer	Matte Mat Matt Mat	GS-N3002	R9



 **Kalebodur**



# Hued





**GS-N2486** / M10x30cm / 4"x12"  
 Mix Dekor (7 Modules)  
 Mix Dekor (7 Modul)  
 Mix Dekor (7 Modul)  
 Mix Décors (7 Modules)



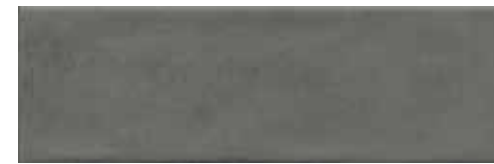
**GS-N2489** / M10x30cm / 4"x12"  
 Natural Dekor (7 Modules)  
 Naturel Dekor (7 Modul)  
 Naturel Dekor (7 Modul)  
 Naturel Décors (7 Modules)



**GS-N2480** / M10x30cm / 4"x12"  
 Off White / Off White / Off Weiß / Blanc Cassé



**GS-N2482** / M10x30cm / 4"x12"  
 Grey / Gri / Grau / Gris



**GS-N2485** / M10x30cm / 4"x12"  
 Anthracite / Antrasit / Anthrazit / Anthracite



**GS-N2487** / M10x30cm / 4"x12"  
 Cotto



**GS-N2481** / M10x30cm / 4"x12"  
 Beige / Bej / Beige / Beige



**GS-N2484** / M10x30cm / 4"x12"  
 Mink / Vizon / Nerz / Vison



**GS-N2488** / M10x30cm / 4"x12"  
 Blue / Mavi / Bleu / Bleu



**RM-6273R** / 29,5x89cm R / 11,6"x35" R  
White / Beyaz / Weiß / Blanc



**RM-6271R** / 29,5x89cm R / 11,6"x35" R  
Beige / Bej / Beige / Beige / Beige



**RM-6279R** / 29,5x89cm R / 11,6"x35" R  
Linear White / Linear Beyaz  
Gesreift Weiß / Linéaire Blanc



**RM-6277R** / 29,5x89cm R / 11,6"x35" R  
Linear Beige / Linear Bej  
Gesreift Beige / Linéaire Beige



**RM-6272R** / 29,5x89cm R / 11,6"x35" R  
Grey / Gri / Grau / Gris



**RM-6274R** / 29,5x89cm R / 11,6"x35" R  
Mink / Vizon / Nerz / Vison



**RM-6281R** / 29,5x89cm R / 11,6"x35" R  
Linear Anthracite / Linear Antrasit  
Gesreift Anthrazit / Linéaire Anthracite



**RM-6278R** / 29,5x89cm R / 11,6"x35" R  
Linear Grey / Linear Gri  
Gesreift Grau / Linéaire Gris



**RM-6275R** / 29,5x89cm R / 11,6"x35" R  
Anthracite / Antrasit / Anthrazit / Anthracite



**RM-6280R** / 29,5x89cm R / 11,6"x35" R  
Linear Mink / Linear Vizon  
Gesreift Nerz / Linéaire Vison



**RM-6282R** / 29,5x89cm R / 11,6"x35" R  
Patchwork Decor (2 Modules)  
Patchwork Dekor (2 Modül)  
Patchwork Dekor (2 Modul)  
Patchwork Décors (2 Modules)





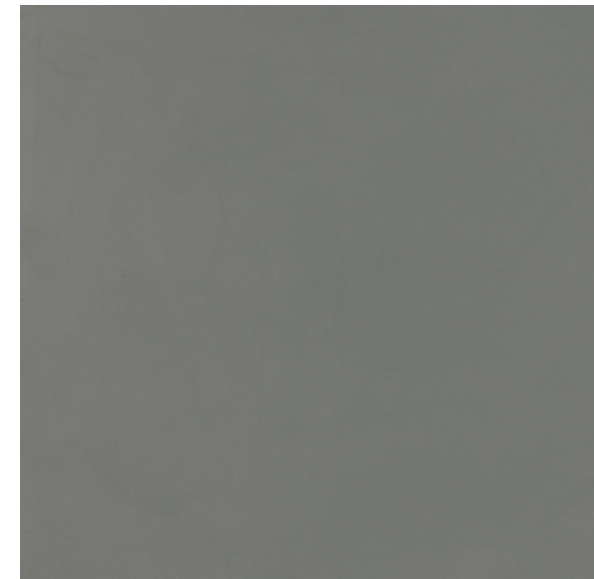
**GMB-A500** / 80x80cm / 32"x32"  
**GMB-A580** / 80x80cm / 32"x32"  
**GMB-U350** / 60x60cm / 24"x24"  
**GS-N8360** / 60x60cm / 24"x24"  
**GS-N7103** / 30x60cm / 12"x24"  
**GS-N6960** / 45x45cm / 18"x18"  
 Off White / Off White / Off Weiß / Blanc Cassé



**GMB-A501** / 80x80cm / 32"x32"  
**GMB-U351** / 60x60cm / 24"x24"  
**GS-N8361** / 60x60cm / 24"x24"  
**GS-N7104** / 30x60cm / 12"x24"  
**GS-N6961** / 45x45cm / 18"x18"  
 Beige / Bej / Beige / Beige



**GMB-A502** / 80x80cm / 32"x32"  
**GMB-U352** / 60x60cm / 24"x24"  
**GS-N8363** / 60x60cm / 24"x24"  
**GS-N7105** / 30x60cm / 12"x24"  
**GS-N6962** / 45x45cm / 18"x18"  
 Grey / Gri / Grau / Gris



**GMB-A503** / 80x80cm / 32"x32"  
**GMB-U353** / 60x60cm / 24"x24"  
**GS-N8362** / 60x60cm / 24"x24"  
**GS-N7106** / 30x60cm / 12"x24"  
**GS-N6963** / 45x45cm / 18"x18"  
 Dark Grey / Koyu Gri / Dunkel Grau / Gris Foncé



GMB-A504 / 80x80cm / 32"x32"  
 GMB-U354 / 60x60cm / 24"x24"  
 GS-N8364 / 60x60cm / 24"x24"  
 GS-N7117 / 30x60cm / 12"x24"  
 GS-N6964 / 45x45cm / 18"x18"  
 Mink / Vizon / Nerz / Vison



GMB-A505 / 80x80cm / 32"x32"  
 GMB-U355 / 60x60cm / 24"x24"  
 GS-N8399 / 60x60cm / 24"x24"  
 GS-N7107 / 30x60cm / 12"x24"  
 GS-N6965 / 45x45cm / 18"x18"  
 Anthracite / Antrasit / Anthrazit / Anthracite



Hued

Codes / Kodlar / Codes / Codes

Color	Surface	29,5x89cm R	Linear	M10x30cm
Renk	Yüzeý			
Farbe	Oberfläche	11,6"x35" R	11,6"x35" R	4"x12"
Couleur	Surface			
<b>White</b>	<b>Matte</b>			
Beyaz	Mat	RM-6273R	RM-6279R	—
Weiß	Matt			
Blanc	Mat			
<b>Off White</b>	<b>Matte</b>			
Off White	Mat	—	—	GS-N2480
Off Weiß	Matt			
Blanc Cassé	Mat			
<b>Beige</b>	<b>Matte</b>			
Bej	Mat	RM-6271R	RM-6277R	GS-N2481
Beige	Matt			
Beige	Mat			
<b>Mink</b>	<b>Matte</b>			
Vizon	Mat	RM-6274R	RM-6280R	GS-N2484
Nerz	Matt			
Vison	Mat			
<b>Grey</b>	<b>Matte</b>			
Gri	Mat	RM-6272R	RM-6278R	GS-N2482
Grau	Matt			
Gris	Mat			
<b>Dark Grey</b>	<b>Matte</b>			
Koyu Gri	Mat	—	—	—
Dunkel Grau	Matt			
Gris Foncé	Mat			
<b>Anthracite</b>	<b>Matte</b>			
Antrasit	Mat	RM-6275R	RM-6281R	GS-N2485
Anthrazit	Matt			
Anthracite	Mat			
	<b>Matte</b>			
	Mat	—	—	GS-N2487
	Matt			
	Mat			
<b>Cotto</b>	<b>Matte</b>			
Blue	Mat	—	—	GS-N2488
Mavi	Matt			
Blau	Matt			
Bleu	Mat			
<b>Mix Decor (7 Modules)</b>	<b>Matte</b>			
Mix Dekor (7 Modül)	Mat	—	—	GS-N2486
Mix Dekor (7 Modul)	Matt			
Mix Décors (7 Modules)	Mat			
<b>Natural Decor (7 Modules)</b>	<b>Matte</b>			
Naturel Dekor (7 Modül)	Mat	—	—	GS-N2489
Naturel Dekor (7 Modul)	Matt			
Naturel Décors (7 Modules)	Mat			
<b>Patchwork Decor (2 Modules)</b>	<b>Matte</b>			
Patchwork Dekor (2 Modül)	Mat	RM-6282R	—	—
Patchwork Dekor (2 Modul)	Matt			
Patchwork Décors (2 Modules)	Mat			



**Hued**

Codes / Kodlar / Codes / Codes

Color Renk Farbe Couleur	Surface Yüzey Oberfläche Surface	80x80cm 32"x32"	60x60cm 24"x24"	45x45cm 18"x18"	30x60cm 12"x24"	33x33cm 13"x13"	Slip Resistance Kaymazlık Gleitwiderstand Antidérapant
<b>White</b> Beyaz Weiß Blanc	<b>Matte</b> Mat Matt Mat	—	GAS-N8605	—	—	—	—
<b>Off White</b> Off White Off Weiß Blanc Cassé	<b>Matte</b> Mat Matt Mat	GMB-A500 GMB-A580 (UPEC)	GMB-U350 (UPEC) GS-N8360 (UPEC) GS-N8600 GS-N8610 GMB-U430	GS-N6960 (UPEC)	GS-N7103 (UPEC) GMB-V460	GAS-N4950 GAS-N4955	R9
<b>Beige</b> Bej Beige Beige	<b>Matte</b> Mat Matt Mat	GMB-A501	GMB-U351 (UPEC) GS-N8361 (UPEC) GS-N8601 GAS-N8606 GMB-U431	GS-N6961 (UPEC)	GS-N7104 (UPEC) GMB-V461 GS-N72356R	GAS-N4951 GAS-N4956	R9
<b>Mink</b> Vizon Nerz Vison	<b>Matte</b> Mat Matt Mat	GMB-A504	GMB-U354 (UPEC) GS-N8364 (UPEC) GS-N8603 GAS-N8608 GMB-U434	GS-N6964 (UPEC)	GS-N7117 (UPEC) GMB-V464 GS-N7235R	GAS-N4953 GAS-N4958	R9
<b>Grey</b> Gri Grau Gris	<b>Matte</b> Mat Matt Mat	GMB-A502	GMB-U352 (UPEC) GS-N8363 (UPEC) GS-N8602 GAS-N8607 GMB-U432	GS-N6962 (UPEC)	GS-N7105 (UPEC) GMB-V462	GAS-N4952 GAS-N4957	R9
<b>Dark Grey</b> Koyu Gri Dunkel Grau Gris Foncé	<b>Matte</b> Mat Matt Mat	GMB-A503	GMB-U353 (UPEC) GS-N8362 (UPEC) GMB-U433	GS-N6963 (UPEC)	GS-N7106 (UPEC) GMB-V463	—	R9
<b>Anthracite</b> Antrasit Anthrazit Anthracite	<b>Matte</b> Mat Matt Mat	GMB-A505	GMB-U355 (UPEC) GS-N8399 (UPEC) GS-N8604 GAS-N8609 GMB-U435	GS-N6965 (UPEC)	GS-N7107 (UPEC) GMB-V465	GAS-N4954 GAS-N4959	R9

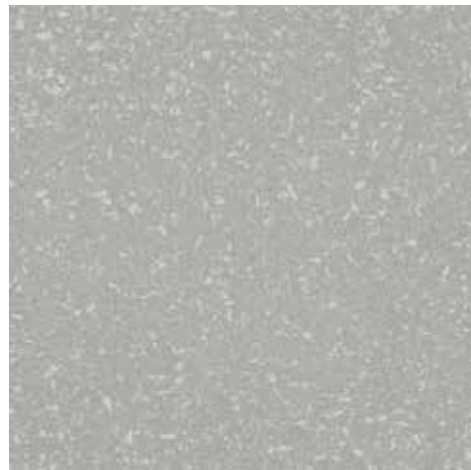


# Terrazzo





**GMB-U794** / 60x60cm / 24"x24"  
**GAS-D7207** / 33x33cm / 13"x13"  
 White / Beyaz / Weiß / Blanc



**GMB-U795** / 60x60cm / 24"x24"  
**GAS-D7208** / 33x33cm / 13"x13"  
 Grey / Gri / Grau / Gris



**GMB-U796** / 60x60cm / 24"x24"  
**GAS-D7209** / 33x33cm / 13"x13"  
 Black / Siyah / Schwarz / Noir



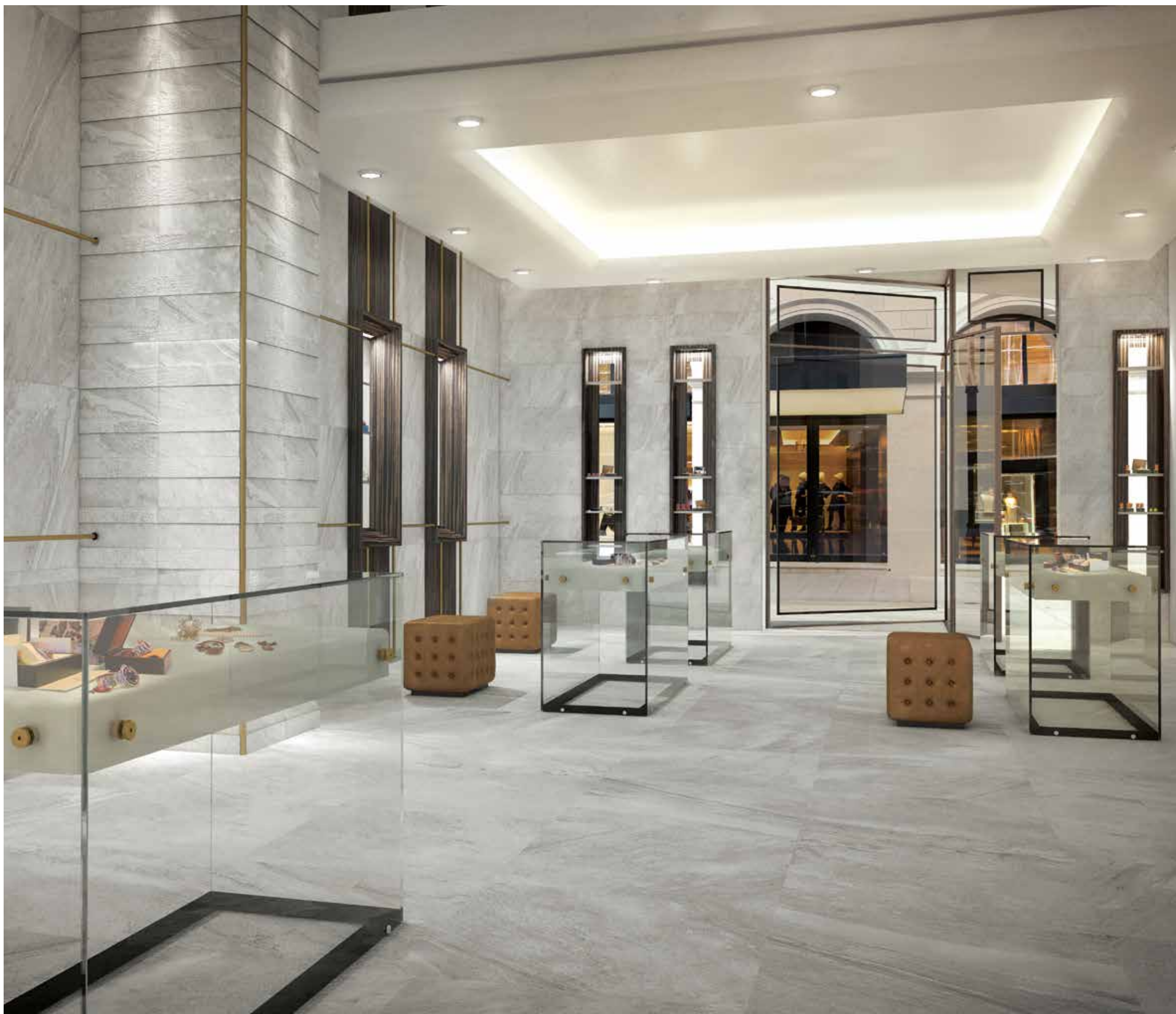
**Terrazzo**

Codes / Kodlar  
 Codes / Codes

Color Renk Farbe Couleur	Surface Yüzey Oberfläche Surface	60x60cm 24"x24"	33x33cm 13"x13"	Slip Resistance Kaymazlık Gleitwiderstand Antidérapant
White Beyaz Weiß Blanc	Matte Mat Matt Mat	GMB-U859 GAS-D7201 GAS-D7204	GAS-D7207 GAS-D7210	R9 / R10
Grey Gri Grau Gris	Matte Mat Matt Mat	GMB-U860 GAS-D7202 GAS-D7205	GAS-D7208 GAS-D7211	R9 / R10 / R11
Black Siyah Schwarz Noir	Matte Mat Matt Mat	GMB-U349 GAS-D7200 GAS-D7203	GAS-D7206 GAS-D7209	R9 / R10



# Silver Stone



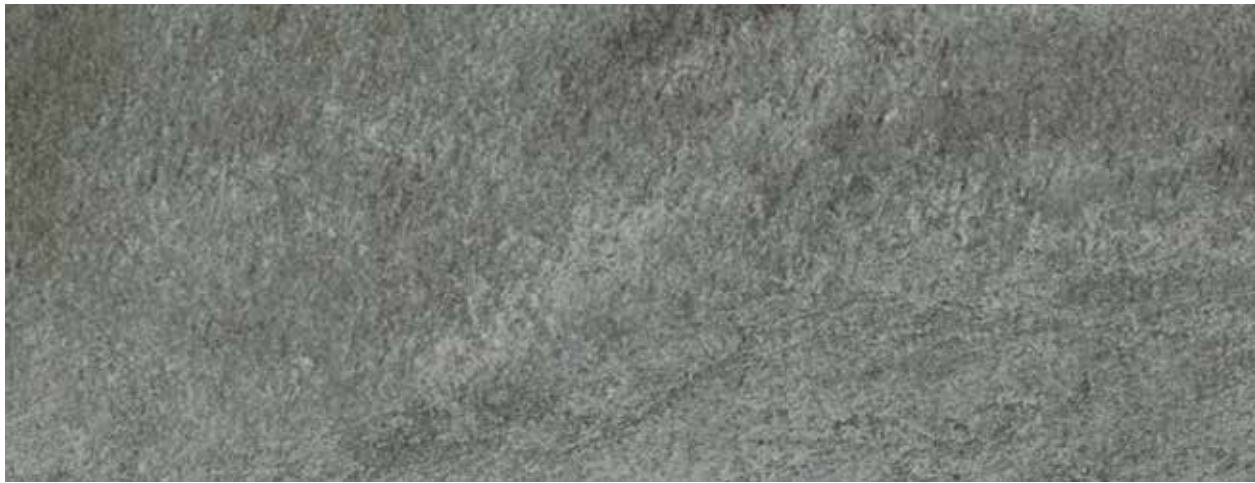




Natural / Naturel / Naturel / Naturel



Grip / Grip / Haftung / Grip



Rock surface / Kaya yüzeyi / Steinoberfläche / Surface de roche



**GMB-A001** / 80x80cm / 32"x32"  
Original Grey / Orijinal Gri  
Original Grau / Original Gris



**GMB-A004** / 80x80cm / 32"x32"  
Anthracite / Antrasit  
Anthrazit / Anthracite



**GMB-A007** / 80x80cm / 32"x32"  
Beige / Bej / Beige / Beige



### Silver Stone

Codes / Kodlar / Codes / Codes

Color Renk Farbe Couleur	Surface Yüzey Oberfläche Surface	80x160cm 32"x64"	60x120cm 24"x48"	80x80cm 32"x32"	60x60cm 24"x24"	Slip Resistance
						Kaymazlık Gleitwiderstand Antidérapant
Original Grey Orijinal Gri Original Grau Original Gris	Natural / Naturel / Naturel / Naturel Rock / Kaya / Felsen / Roche Grip / Grip/ Haftung / Gris	GMB-E060 — —	GMB-R054 GMK-R054 —	GMB-A001 GKB-A001 GKB-A002	GMB-U001 GMK-U054 —	R9 R10 R10
Anthracite Antrasit Anthrazit Anthracite	Natural / Naturel / Naturel / Naturel Rock / Kaya / Felsen / Roche Grip / Grip/ Haftung / Gris	GMB-E061 — —	GMB-R057 GMK-R057 —	GMB-A004 GKB-A003 GKB-A004	GMB-U004 GMK-U057 —	R9 R10 R10
Beige Bej Beige Beige	Natural / Naturel / Naturel / Naturel Rock / Kaya / Felsen / Roche Grip / Grip/ Haftung / Gris	GMB-E062 — —	GMB-R060 GMB-R099 GMK-R060	GMB-A007 GKB-A005	GMB-U007 GMK-U060	R9 R10 R10



# Stromboli







**GMB-R025** / 60x120cm / 24"x48"  
**GMB-U025** / 60x60cm / 24"x24"  
 White Natural / Beyaz Naturel  
 Weiß Naturel / Blanc Naturel



**GMB-R142** / 60x120cm / 24"x48"  
**GMB-U142** / 60x60cm / 24"x24"  
 Silver Natural / Gümüş Naturel  
 Silber Naturel / Argent Naturel



**GMB-R029** / 60x120cm / 24"x48"  
**GMB-U847** / 60x60cm / 24"x24"  
 Beige Natural / Bej Naturel  
 Beige Naturel / Beige Naturel



**GMB-R027** / 60x120cm / 24"x48"  
**GMB-U027** / 60x60cm / 24"x24"  
 Anthracite Natural / Antrasit Naturel  
 Anthrazit Naturel / Anthracite Naturel



**Slip Resistance**  
 Kaymazlık  
 Gleitwiderstand  
 Antidérapant

**Stromboli**

Codes / Kodlar / Codes / Codes

Color Renk Farbe Couleur	Surface Yüzey Oberfläche Surface	Slip Resistance		
		60x120cm 24"x48"	60x60cm 24"x24"	
<b>White</b> Beyaz Weiß Blanc	<b>Matte</b> Mat Matt Mat	GMB-R025	GMB-U025	R10
<b>Silver</b> Gümüş Silber Argent	<b>Matte</b> Mat Matt Mat	GMB-R142	GMB-U142	R10
<b>Beige</b> Bej Beige Beige	<b>Matte</b> Mat Matt Mat	GMB-R029	GMB-U847	R10
<b>Anthracite</b> Antrasit Anthrazit Anthracite	<b>Matte</b> Mat Matt Mat	GMB-R027	GMB-U027	R10





**MPB-E085**  
**GMB-E102**  
80x160cm / 32"x64"



**MPB-E100 / MDL A**  
80x160cm / 32"x64"



**MPB-E101 / MDL B**  
80x160cm / 32"x64"



**Zaimus**

**Codes / Kodlar**  
Codes / Codes

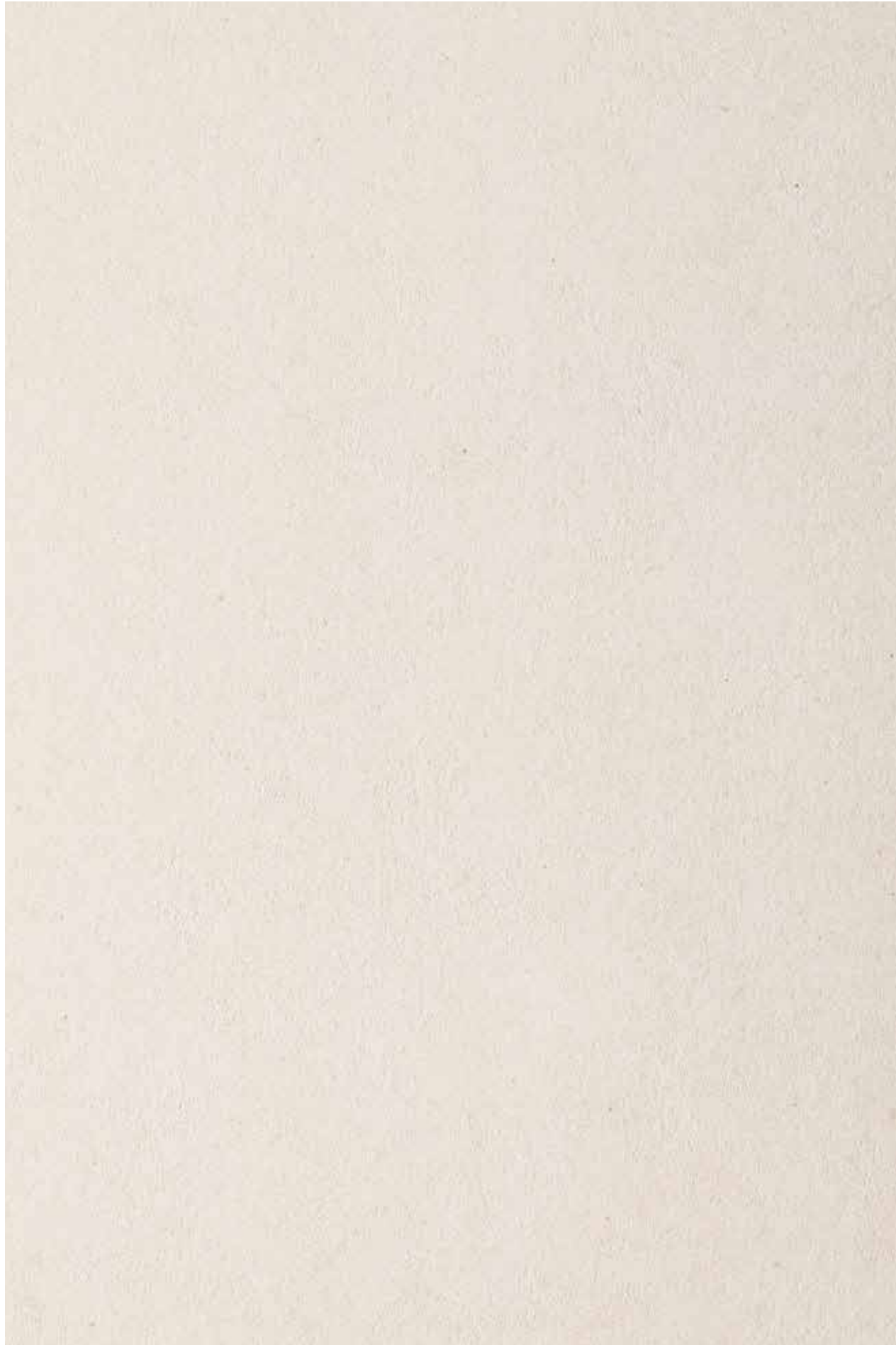
<b>Color</b> Renk Farbe Couleur	<b>Surface</b> Yüzey Oberfläche Surface	<b>80x160cm</b> 32"x64"	<b>Slip Resistance</b> Kaymazlık Gleitwiderstand Antidérapant
	<b>Matte / Mat / Matt / Mat</b>	<b>GMB-E102</b>	<b>R9</b>
	<b>Polished / Parlak / Poliert / Poli</b>	<b>MPB-E085</b>	—
<b>Zaimus</b>	<b>Polished</b> Parlak Poliert		—
<b>Zaimus MDL A</b>	<b>Poli</b>	<b>MPB-E100</b>	—
	<b>Polished</b> Parlak Poliert		—
<b>Zaimus MDL B</b>	<b>Poli</b>	<b>MPB-E101</b>	—



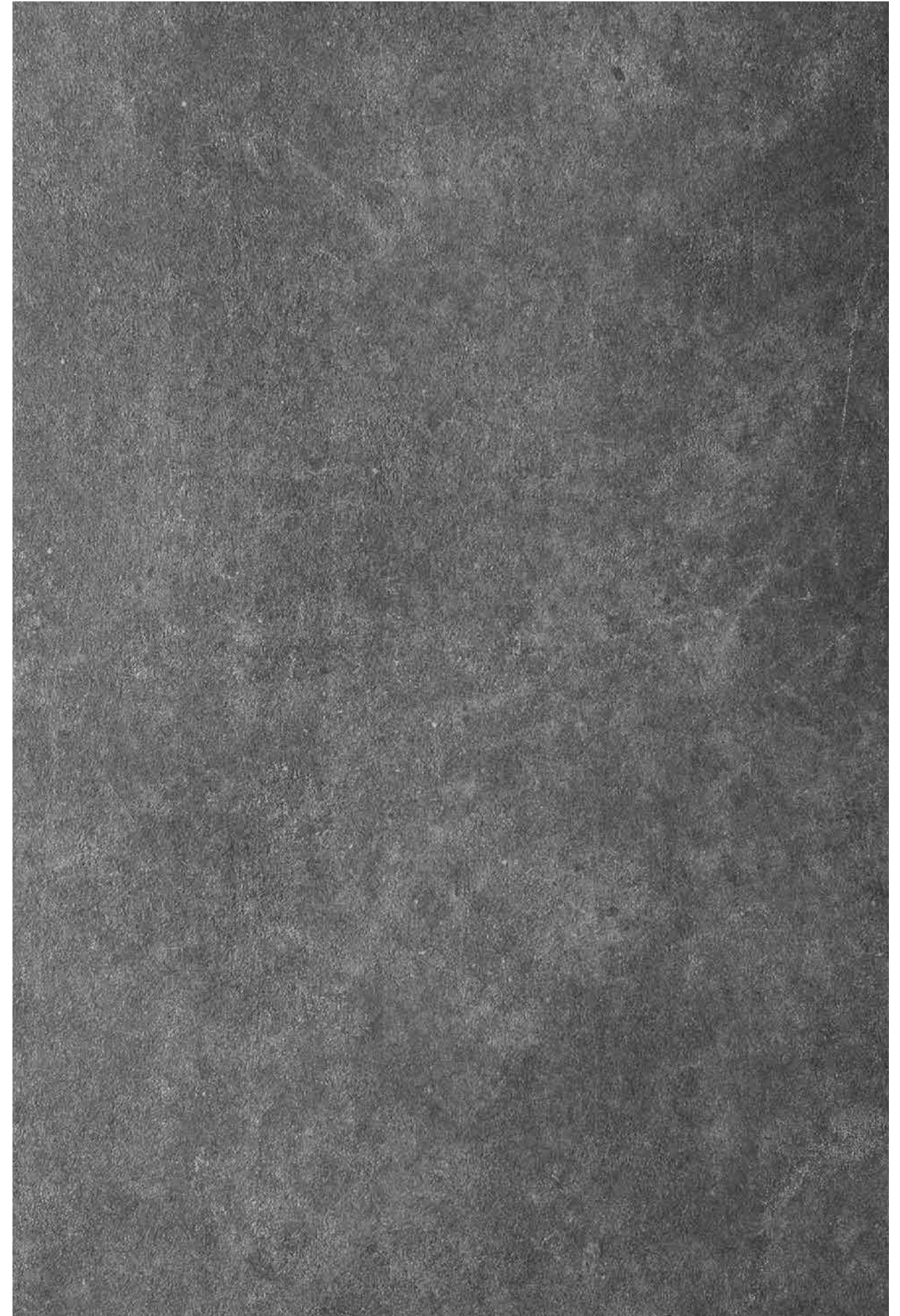
# Cement 2.0







Matte / Mat / Matt / Mat



Semi Polished / Yan Parlak / Halb Hell / Semi Poli





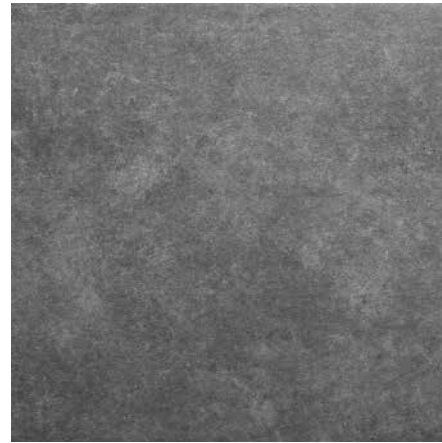
**GMB-R263 / LGMB-R263**  
60x120cm / 24"x48"  
**GMB-U1046 / LGMB-U1046**  
60x60cm / 24"x24"  
Ice / Buz / Eis / Ice



**GMB-R621 / LGMB-R621**  
60x120cm / 24"x48"  
**GMB-U927 / LGMB-U927**  
60x60cm / 24"x24"  
Clay / Kil / Klei / Argile



**GMB-R623 / LGMB-R623**  
60x120cm / 24"x48"  
**GMB-U929 / LGMB-U929**  
60x60cm / 24"x24"  
Soil / Toprak/ Boden / Sol



**GMB-R1045 / LGMB-R1045**  
60x120cm / 24"x48"  
**GMB-U1045 / LGMB-U1045**  
60x60cm / 24"x24"  
Cold Grey / Cold Gri / Cold Grau / Cold Gris



**GMB-E624 / GKB-E624**  
80x160cm / 32"x64"  
**GMB-R624 / LGMB-R624**  
60x120cm / 24"x48"  
**GMB-U930 / LGMB-U930**  
60x60cm / 24"x24"  
Anthracite / Antrasit / Anthrazit / Anthracite



**Cement 2.0**

Kodlar / Codes / Codes / Codes

Renk Color Farbe Couleur	Yüzeý Surface Oberfläche Surface	80x160cm 32"x64"	60x120cm 24"x48"	60x60cm 24"x24"	Kaymazlık Slip Resistance Gleitwiderstand Antidérapant
Ice Buz Eis Ice	Mat / Matte Matt / Mat Yarı Parlak / Semi Polished Halb Hell / Semi Poli	—	GMB-R263	GMB-U1046	R9 —
Clay Kil Ton Argile	Mat / Matte Matt / Mat Yarı Parlak / Semi Polished Halb Hell / Semi Poli	—	GMB-R621	GMB-U927	R9 —
Soil Toprak Boden Sol	Mat / Matte Matt / Mat Yarı Parlak / Semi Polished Halb Hell / Semi Poli	—	GMB-R623	GMB-U929	R9 —
Cold Grey Cold Gri Cold Grau Cold Gris	Mat / Matte Matt / Mat Yarı Parlak / Semi Polished Halb Hell / Semi Poli	—	GMB-R1045	GMB-U1045	R9 —
Anthracite Antrasit Anthrazit Anthracite	Mat / Matte Matt / Mat Yarı Parlak / Semi Polished Halb Hell / Semi Poli	GMB-E624	GMB-R624	GMB-U930	R9 —





# Fabbrica



**MMB-R283** / 60x120cm / 24"x48"  
**MMB-A465** / 80x80cm / 31"x31"  
**GMB-U340** / 60x60cm / 24"x24"  
**GMB-O156** / 30x60cm / 12"x24"  
**GS-D7832** / 60x60cm / 24"x24"  
 White / Beyaz / Weiß / Blanc



**MMB-R284** / 60x120cm / 24"x48"  
**MMB-A466** / 80x80cm / 31"x31"  
**GMB-U341** / 60x60cm / 24"x24"  
**GMB-O157** / 30x60cm / 12"x24"  
**GS-D7833** / 60x60cm / 24"x24"  
 Grey / Gri / Grau / Gris



**MMB-R285** / 60x120cm / 24"x48"  
**MMB-A467** / 80x80cm / 31"x31"  
**GMB-U342** / 60x60cm / 24"x24"  
**GMB-O158** / 30x60cm / 12"x24"  
**GS-D7834** / 60x60cm / 24"x24"  
 Silver / Gümüş / Silber / Argent



**MMB-R286** / 60x120cm / 24"x48"  
**MMB-A469** / 80x80cm / 31"x31"  
**GMB-U343** / 60x60cm / 24"x24"  
**GMB-O159** / 30x60cm / 12"x24"  
**GS-D7835** / 60x60cm / 24"x24"  
 Beige / Bej / Beige / Beige



**MMB-R344** / 60x120cm / 24"x48"  
**MMB-A344** / 80x80cm / 31"x31"  
**GMB-U344** / 60x60cm / 24"x24"  
**GMB-O1004** / 30x60cm / 12"x24"  
 Anthracite / Antrasit / Anthrazit / Anthracite



**Fabbrica**

Codes / Kodlar /  
 Codes / Codes

Color Renk Farbe Couleur	Surface Yüzey Oberfläche Surface	60x120cm 24"x48"	80x80cm 32"x32"	60x60cm 24"x24"	30x60cm 12"x24"	Slip Resistance Kaymazlık Gleitwiderstand Antidérapant
White Beyaz Weiß Blanc	Matte Mat Matt Mat	MMB-R283	MMB-A465	GS-D7832 GAS-D8650 GMB-U340	GMB-O156	R9 / R10
Grey Gri Grau Gris	Matte Mat Matt Mat	MMB-R284	MMB-A466	GS-D7833 GAS-D8651 GMB-U341	GMB-O157	R9 / R10
Silver Gümüş Silber Argent	Matte Mat Matt Mat	MMB-R285	MMB-A467	GS-D7834 GAS-D8652 GMB-U342	GMB-O158	R9 / R10
Beige Bej Beige Beige	Matte Mat Matt Mat	MMB-R286	MMB-A469	GS-D7835 GAS-D8653 GMB-U343	GMB-O159	R9 / R10
Anthracite Antrasit Anthrazit Anthracite	Matte Mat Matt Mat	MMB-R344	MMB-A344	GMB-U344	GMB-O1004	R9





# Icon İkon





**GMB-R750** / 60x120cm / 24"x48"  
**GMB-U216** / 60x60cm / 24"x24"  
Cream / Krem / Creme / Crème



**GMB-R752** / 60x120cm / 24"x48"  
**GMB-U218** / 60x60cm / 24"x24"  
Anthracite / Antrasit / Anthrazit / Anthracite



**GMB-R751** / 60x120cm / 24"x48"  
**GMB-U217** / 60x60cm / 24"x24"  
Grey / Gri / Grau / Gris



**GMB-R728** / 60x120cm / 24"x48"  
**GMB-U220** / 60x60cm / 24"x24"  
Beige / Bej / Beige / Beige



## Icon / İkon

Codes / Kodlar /  
Codes / Codes

Color Renk Farbe Couleur	Surface Yüzey Oberfläche Surface	60x120cm 24"x48"	60x60cm 24"x24"	Slip Resistance Kaymazlık Gleitwiderstand Antidérapant
Cream Krem Creme Crème	Matte Mat Matt Mat	GMB-R750	GMB-U216	R9
Grey Gri Grau Gris	Matte Mat Matt Mat	GMB-R751	GMB-U217	R9
Beige Bej Beige Beige	Matte Mat Matt Mat	GMB-R728	GMB-U220	R9
Anthracite Antrasit Anthrazit Anthracite	Matte Mat Matt Mat	GMB-R752	GMB-U218	R9



# Luxury Cement





**GMB-R707** / 60x120cm / 24"x48"  
**GMB-U707** / 60x60cm / 24"x24"  
 Grey / Gri / Grau / Gris



**GMB-R706** / 60x120cm / 24"x48"  
**GMB-U706** / 60x60cm / 24"x24"  
 Mink / Vizon / Nerz / Vison



**GMB-R710** / 60x120cm / 24"x48"  
**GMB-U710** / 60x60cm / 24"x24"  
 Cream / Krem / Creme / Crème



**GMB-R709** / 60x120cm / 24"x48"  
**GMB-U709** / 60x60cm / 24"x24"  
 Anthracite / Antrasit / Anthrazit / Anthracite



**Luxury Cement**

Codes / Kodlar / Codes / Codes

Color Renk Farbe Couleur	Surface Yüzey Oberfläche Surface	60x120cm 24"x48"	60x60cm 24"x24"	Slip Resistance Kaymazlık Gleitwiderstand Antidérapant
Grey Gri Grau Gris	Matte Mat Matt Mat	GMB-R707	GMB-U707	R9
Mink Vizon Nerz Vison	Matte Mat Matt Mat	GMB-R706	GMB-U706	R9
Cream Krem Creme Crème	Matte Mat Matt Mat	GMB-R710	GMB-U710	R9
Anthracite Antrasit Anthrazit Anthracite	Matte Mat Matt Mat	GMB-R709	GMB-U709	R9

# Royal Marbles





80x160cm / 32"x64"  
60x120cm / 24"x48"  
80x80cm / 32"x32"  
60x60cm / 24"x24"  
Iceberg



60x120cm / 24"x48"  
60x60cm / 24"x24"  
Pulpis Grey / Pulpis Gri / Pulpis Grau / Pulpis Gris



60x120cm / 24"x48"  
60x60cm / 24"x24"  
Golden Storm Grey / Golden Storm Gri  
Golden Storm Grau / Golden Storm Gris



60x120cm / 24"x48"  
60x60cm / 24"x24"  
Invisible Marble White / Invisible Marble Beyaz  
Invisible Marble Weiß / Invisible Marble Blanc



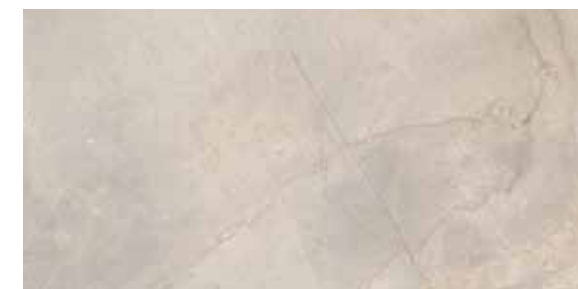
60x120cm / 24"x48"  
60x60cm / 24"x24"  
Tuana Cream / Tuana Krem  
Tuana Creme / Tuana Crème



60x120cm / 24"x48"  
60x60cm / 24"x24"  
Tuana Grey / Tuana Gri / Tuana Grau / Tuana Gris



60x120cm / 24"x48"  
60x60cm / 24"x24"  
Statuario



60x120cm / 24"x48"  
60x60cm / 24"x24"  
Vivaldi Bone / Vivaldi Kemik  
Vivaldi Hellbeige / Vivaldi Os



60x120cm / 24"x48"  
60x60cm / 24"x24"  
Marrakesh Cream / Marrakesh Krem  
Marrakesh Creme / Marrakesh Crème



60x120cm / 24"x48"  
Marrakesh Exotic / Marrakesh Egzotik  
Marrakesh Exotisch / Marrakesh Exotique



60x120cm / 24"x48"  
60x60cm / 24"x24"  
Vivaldi Mink / Vivaldi Vizon / Vivaldi Nerz / Vivaldi Vison



60x120cm / 24"x48"  
60x60cm / 24"x24"  
Asteroid



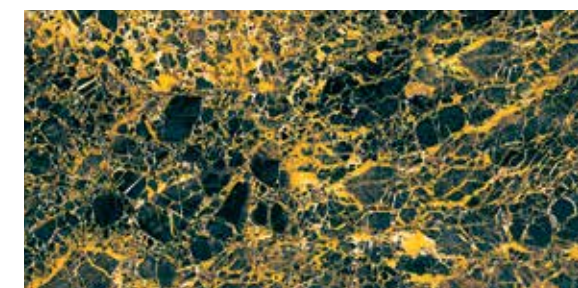
60x120cm / 24"x48"  
60x60cm / 24"x24"  
Onyx



60x120cm / 24"x48"  
60x60cm / 24"x24"  
Onyx White / Onyx Beyaz / Onyx Weiß / Onyx Blanc



60x120cm / 24"x48"  
60x60cm / 24"x24"  
Bluetta



60x120cm / 24"x48"  
60x60cm / 24"x24"  
Black & Gold

**Usage Areas of Matte and Semi-Polished Products.**  
Mat ve Yarı Parlak Ürünlerin Kullanım Alanları.  
Anwendungsbereiche von Matten und Halb Glänzenden Produkten.  
Domaines d'utilisation des produits Mats et Semi Polis.



**Usage Areas of Polished Products.** / Parlak Ürünlerin Kullanım Alanları.  
Anwendungsbereiche von glänzenden Produkten. / Domaines d'utilisation des produits polis.



**\*Not recommended in areas with heavy pedestrian traffic.**  
Yoğun yaya trafiği olan alanlarda önerilmez.  
In Gebieten mit starkem Fußgängerverkehr nicht zu empfehlen.  
Non recommandé dans les zones à fort trafic piétonnier.

**Usage Areas of Matte and Semi-Polished Products.**  
Mat ve Yarı Parlak Ürünlerin Kullanım Alanları.  
Anwendungsbereiche von Matten und Halb Glänzenden Produkten.  
Domaines d'utilisation des produits Mats et Semi Polis.



**Usage Areas of Polished Products.** / Parlak Ürünlerin Kullanım Alanları.  
Anwendungsbereiche von glänzenden Produkten. / Domaines d'utilisation des produits polis.

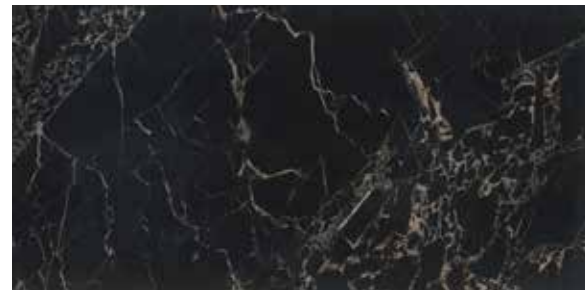


**\*Not recommended in areas with heavy pedestrian traffic.**  
Yoğun yaya trafiği olan alanlarda önerilmez.  
In Gebieten mit starkem Fußgängerverkehr nicht zu empfehlen.  
Non recommandé dans les zones à fort trafic piétonnier.





60x120cm / 24"x48"  
60x60cm / 24"x24"  
Midnight Black



60x120cm / 24"x48"  
60x60cm / 24"x24"  
Portoro Black / Portoro Siyah  
Portoro Schwarz / Portoro Noir



60x120cm / 24"x48"  
60x60cm / 24"x24"  
Silver River Openbook A Light



60x120cm / 24"x48"  
60x60cm / 24"x24"  
Silver River Openbook B Light



60x120cm / 24"x48"  
60x60cm / 24"x24"  
Dark Cloud



60x120cm / 24"x48"  
60x60cm / 24"x24"  
Prestij Beyaz / Prestij White  
Prestij Weiß / Prestij Blanc



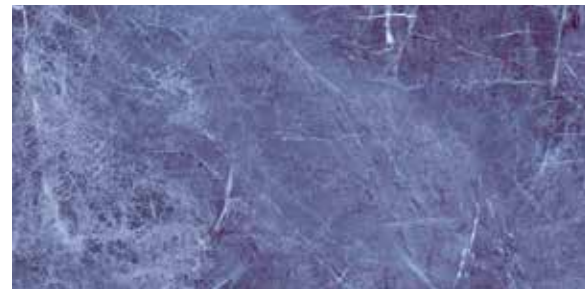
60x120cm / 24"x48"  
60x60cm / 24"x24"  
Coffee Dream Brown / Coffee Dream Kahve  
Coffee Dreem Braun / Coffee Dreem Marron



60x120cm / 24"x48"  
60x60cm / 24"x24"  
Core White



60x120cm / 24"x48"  
60x60cm / 24"x24"  
Prestij Grey / Prestij Gri / Prestij Grau / Prestij Gris



60x120cm / 24"x48"  
60x60cm / 24"x24"  
Prestij Anthracite / Prestij Antrasit  
Prestij Anthrazit / Prestij Anthracite



60x120cm / 24"x48"  
60x60cm / 24"x24"  
Coffee Dream Bone / Coffee Dream Kemik  
Coffee Dreem Hellbeige / Coffee Dreem Os



60x120cm / 24"x48"  
60x60cm / 24"x24"  
Coffee Dream Cream / Coffee Dream Krem  
Coffee Dreem Creme / Coffee Dreem Crème

**Usage Areas of Matte and Semi-Polished Products.**  
Mat ve Yarı Parlak Ürünlerin Kullanım Alanları.  
Anwendungsbereiche von Matten und Halb Glänzenden Produkten.  
Domaines d'utilisation des produits Mats et Semi Polis.



**Usage Areas of Polished Products.** / Parlak Ürünlerin Kullanım Alanları.  
Anwendungsbereiche von glänzenden Produkten. / Domaines d'utilisation des produits polis.



**\*Not recommended in areas with heavy pedestrian traffic.**  
Yoğun yaya trafiği olan alanlarda önerilmez.  
In Gebieten mit starkem Fußgängerverkehr nicht zu empfehlen.  
Non recommandé dans les zones à fort trafic piétonnier.

**Usage Areas of Matte and Semi-Polished Products.**  
Mat ve Yarı Parlak Ürünlerin Kullanım Alanları.  
Anwendungsbereiche von Matten und Halb Glänzenden Produkten.  
Domaines d'utilisation des produits Mats et Semi Polis.



**Usage Areas of Polished Products.** / Parlak Ürünlerin Kullanım Alanları.  
Anwendungsbereiche von glänzenden Produkten. / Domaines d'utilisation des produits polis.



**\*Not recommended in areas with heavy pedestrian traffic.**  
Yoğun yaya trafiği olan alanlarda önerilmez.  
In Gebieten mit starkem Fußgängerverkehr nicht zu empfehlen.  
Non recommandé dans les zones à fort trafic piétonnier.



80x160cm / 32"x64"  
60x120cm / 24"x48"  
80x80cm / 32"x32"  
60x60cm / 24"x24"  
Silver River Dark



80x160cm / 32"x64"  
60x120cm / 24"x48"  
80x80cm / 32"x32"  
60x60cm / 24"x24"  
Silver River Light



80x160cm / 32"x64"  
60x120cm / 24"x48"  
80x80cm / 32"x32"  
60x60cm / 24"x24"  
Savana Dark



80x160cm / 32"x64"  
60x120cm / 24"x48"  
80x80cm / 32"x32"  
60x60cm / 24"x24"  
Savana Light

Usage Areas of Matte and Semi-Polished Products.  
Mat ve Yarı Parlak Ürünlerin Kullanım Alanları.  
Anwendungsbereiche von Matten und Halb Glänzenden Produkten.  
Domaines d'utilisation des produits Mats et Semi Polis.



Usage Areas of Polished Products. / Parlak Ürünlerin Kullanım Alanları.  
Anwendungsbereiche von glänzenden Produkten. / Domaines d'utilisation des produits polis.



**\*Not recommended in areas with heavy pedestrian traffic.**  
Yoğun yaya trafiği olan alanlarda önerilmez.  
In Gebieten mit starkem Fußgängerverkehr nicht zu empfehlen.  
Non recommandé dans les zones à fort trafic piétonnier.

Usage Areas of Matte and Semi-Polished Products.  
Mat ve Yarı Parlak Ürünlerin Kullanım Alanları.  
Anwendungsbereiche von Matten und Halb Glänzenden Produkten.  
Domaines d'utilisation des produits Mats et Semi Polis.



Usage Areas of Polished Products. / Parlak Ürünlerin Kullanım Alanları.  
Anwendungsbereiche von glänzenden Produkten. / Domaines d'utilisation des produits polis.



**\*Not recommended in areas with heavy pedestrian traffic.**  
Yoğun yaya trafiği olan alanlarda önerilmez.  
In Gebieten mit starkem Fußgängerverkehr nicht zu empfehlen.  
Non recommandé dans les zones à fort trafic piétonnier.



## Royal Marbles

Codes / Kodlar / Codes / Codes

Color Renk Farbe Couleur	Surface Yüzey Oberfläche Surface	60x120cm 24"x48"	60x60cm 24"x24"	Slip Resistance Kaymazlık Gleitwiderstand Antidérapant
	Polished Parlak Poliert Poli	MPB-R243	MPB-U243	—
<b>Iceberg</b>				
Tuana Cream Tuana Krem Tuana Creme Tuana Crème	Polished Parlak Poliert Poli	MPB-R244	MPB-U772	—
Tuana Grey Tuana Gri Tuana Grau Tuana Gris	Polished Parlak Poliert Poli	MPB-R242	MPB-U242	—
Marrakesh Cream Marrakesh Krem Marrakesh Creme Marrakesh Crème	Polished Parlak Poliert Poli	MPB-R245	MPB-U245	—
Marrakesh Exotic Marrakesh Egzotik Marrakesh Exotisch Marrakesh Exotique	Polished Parlak Poliert Poli	MPB-R246	—	—
	Polished Parlak Poliert Poli	MPB-R770	MPB-U770	—
<b>Onyx</b>				
Onyx White Onyx Beyaz Onyx Weiß Onyx Blanc	Polished Parlak Poliert Poli	MPB-R771	MPB-U771	—
Portoro Black Portoro Siyah Portoro Schwarz Portoro Noir	Polished Parlak Poliert Poli	MPB-R370	MPB-U280	—
	Polished Parlak Poliert Poli	MPB-R379	MPB-U842	—
<b>Dark Cloud</b>				
Golden Storm Grey Golden Storm Gri Golden Storm Grau Golden Storm Gris	Polished Parlak Poliert Poli	MPB-R382	MPB-U845	—
Invisible Marble White Invisible Marble Beyaz Invisible Marble Weiß Invisible Marble Blanc	Polished / Parlak Poliert / Poli	MPB-R373	MPB-U831	—
	Matte / Mat Matt / Mat	GMB-R374	GMB-U832	R9





## Royal Marbles

Codes / Kodlar / Codes / Codes

Color Renk Farbe Couleur	Surface Yüzeý Oberfläche Surface	80x160cm 32"x64"	60x120cm 24"x48"	60x60cm 24"x24"	Slip Resistance Kaymazlık Gleitwiderstand Antidérapant
Pulpis Grey Pulpis Gri Pulpis Grau Pulpis Gris	Polished Parlak Poliert Poli	—	MPB-R251	MPB-U774	—
Midnight Black	Polished Parlak Poliert Poli	—	MPB-R269	MPB-U248	—
Statuario	Polished Parlak Poliert Poli	MPB-E114	MPB-R257	MPB-U257	—
Vivaldi Bone Vivaldi Kemik Vivaldi Hellbeige Vivaldi Os	Polished Parlak Poliert Poli	—	MPB-R330	MPB-U260	—
Vivaldi Mink Vivaldi Vizon Vivaldi Nerz Vivaldi Vison	Polished Parlak Poliert Poli	—	MPB-R331	MPB-U261	—
Snowyard	Polished Parlak Poliert Poli	—	MPB-R295	MPB-U296	—



## Royal Marbles

Codes / Kodlar / Codes / Codes

Color Renk Farbe Couleur	Surface Yüzeý Oberfläche Surface	60x120cm 24"x48"	60x60cm 24"x24"	Slip Resistance Kaymazlık Gleitwiderstand Antidérapant
Asteroid	Polished Parlak Poliert Poli	MPB-R560	MPB-U790	—
Bluetta	Polished Parlak Poliert Poli	MPB-R573	MPB-U326	—
Prestij White Prestij Beyaz Prestij Weiß Prestij Blanc	Polished Parlak Poliert Poli	MPB-R561	MPB-U791	—
Prestij Grey Prestij Gri Prestij Grau Prestij Gris	Polished Parlak Poliert Poli	MPB-R562	MPB-U792	—
Prestij Anthracite Prestij Antrasit Prestij Anthrazit Prestij Anthracite	Polished Parlak Poliert Poli	MPB-R563	MPB-U793	—
Black & Gold	Polished Parlak Poliert Poli	MPB-R571	MPB-U327	—

## Royal Marbles

Codes / Kodlar / Codes / Codes

Color Renk Farbe Couleur	Surface Yüzeý Oberfläche Surface	80x160cm 32"x64"	60x120cm 24"x48"	80x80cm 32"x32"	60x60cm 24"x24"	Slip Resistance Kaymazlık Gleitwiderstand Antidérapant
Core White Core Beyaz Core Weiß Core Blanc	Polished / Parlak Poliert / Poli Matte / Mat Matt / Mat	—	—	—	—	—
Coffee Dream Cream Coffee Dream Krem Coffee Dream Creme Coffee Dream Crème	Polished / Parlak Poliert / Poli Matte / Mat Matt / Mat	—	MPB-R411	—	MPB-U411	—
Coffee Dream Bone Coffee Dream Kemik Coffee Dream Knochen Coffee Dream Os	Polished Parlak Poliert Poli	—	MPB-R365	—	MPB-U411 MPB-U366	—
Coffee Dream Brown Coffee Dream Kahve Coffee Dream Braun Coffee Dream Marron	Polished Parlak Poliert Poli	—	MPB-R376	—	MPB-U834	—

## Iceberg

Codes / Kodlar / Codes / Codes

Color Renk Farbe Couleur	Surface Yüzeý Oberfläche Surface	80x160cm 32"x64"	60x120cm 24"x48"	80x80cm 32"x32"	60x60cm 24"x24"	Slip Resistance Kaymazlık Gleitwiderstand Antidérapant
White Beyaz Weiß Blanc	Matte Mat Matt Mat	GMB-E110	—	GMB-A558	GMB-U797	R9
White Beyaz Weiß Blanc	Polished Parlak Poliert Poli	MPB-E111	MPB-R243	MPB-A559	MPB-U243	—
White Beyaz Weiß Blanc	Semi Polished Yarı Parlak Halb Hell Semi Poli	LGMB-E110	LGMB-R564	LGMB-A558	LGMB-U797	—

## Savana

Codes / Kodlar / Codes / Codes

Color Renk Farbe Couleur	Surface Yüzeý Oberfläche Surface	80x160cm 32"x64"	60x120cm 24"x48"	80x80cm 32"x32"	60x60cm 24"x24"	Slip Resistance Kaymazlık Gleitwiderstand Antidérapant
Savana Dark	Matte Mat Matt Mat	GMB-E300	GMB-R300	GMB-A300	GMB-U300	R9
	Polished Parlak Poliert Poli	GPB-E300	GPB-R300	GPB-A300	GPB-U300	—
	Semi Polished Yarı Parlak Halb Hell Semi Poli	LGMB-E300	LGMB-R300	LGMB-A300	LGMB-U300	—
Savana Light	Matte Mat Matt Mat	GMB-E320	GMB-R320	GMB-A320	GMB-U320	R9
	Polished Parlak Poliert Poli	GPB-E320	GPB-R320	GPB-A320	GPB-U320	—
	Semi Polished Yarı Parlak Halb Hell Semi Poli	LGMB-E320	LGMB-R320	LGMB-A320	LGMB-U320	—

## Silver River

Codes / Kodlar / Codes / Codes

Color Renk Farbe Couleur	Surface Yüzeý Oberfläche Surface	80x160cm 32"x64"	60x120cm 24"x48"	80x80cm 32"x32"	60x60cm 24"x24"	Slip Resistance Kaymazlık Gleitwiderstand Antidérapant
Silver River Dark	Matte / Mat / Matt / Mat	GMB-E302	GMB-R302	GMB-A302	GMB-U302	R9
	Polished / Parlak / Poliirt / Poli	GPB-E302	GPB-R302	GPB-A302	GPB-U302	—
	Semi Polished / Yarı Parlak Halb Hell / Semi Poli	LGMB-E302	LGMB-R302	LGMB-A302	LGMB-U302	—
Open Book A Dark	Polished / Parlak / Poliirt / Poli	GPB-E303	—	—	—	—
Open Book B Dark	Polished / Parlak / Poliirt / Poli	GPB-E397	—	—	—	—
Silver River Light	Matte / Mat / Matt / Mat	GMB-E322	GMB-R322	GMB-A322	GMB-U322	R9
	Polished / Parlak / Poliirt / Poli	GPB-E322	GPB-R322	GPB-A322	GPB-U322	—
	Semi Polished / Yarı Parlak Halb Hell / Semi Poli	LGMB-E322	LGMB-R322	LGMB-A322	LGMB-U322	—
Open Book A Light	Polished / Parlak / Poliirt / Poli	GPB-E323	MPB-R1048	—	—	—
Open Book B Light	Polished / Parlak / Poliirt / Poli	GPB-E391	MPB-R1049	—	—	—



# Royal Gallery





**MPB-R270** / 60x120cm / 24"x48"  
**MPB-U270** / 60x60cm / 24"x24"  
 Concrete Galaxy



**MPB-R361** / 60x120cm / 24"x48"  
**MPB-U361** / 60x60cm / 24"x24"  
**GMB-R361** / 60x120cm / 24"x48"  
**GMB-U361** / 60x60cm / 24"x24"  
 Concrete Galaxy Silver



**MPB-R239** / 60x120cm / 24"x48"  
**MPB-U368** / 60x60cm / 24"x24"  
 Metalix Bone / Metalix Kemik  
 Metalix Hellbeige / Metalix Os



**MPB-R360** / 60x120cm / 24"x48"  
**MPB-U360** / 60x60cm / 24"x24"  
 Beige / Bej / Beige / Beige



**MPB-R263** / 60x120cm / 24"x48"  
**MPB-U369** / 60x60cm / 24"x24"  
 Metalix Anthracite / Metalix Antrasit  
 Metalix Anthrazit / Metalix Anthracite



**GMB-R235** / 60x120cm / 24"x48"  
 Pattern White / Pattern Beyaz  
 Pattern Weiß / Pattern Blanc



**GMB-R235** / 60x120cm / 24"x48"  
 Pattern Decor / Pattern Dekor  
 Pattern Dekor / Pattern Décor

**Usage Areas of Matte and Semi-Polished Products.**  
 Mat ve Yarı Parlak Ürünlerin Kullanım Alanları.  
 Anwendungsbereiche von Matten und Halb Glänzenden Produkten.  
 Domaines d'utilisation des produits Mats et Semi Polis.



**Usage Areas of Polished Products.**  
 Parlak Ürünlerin Kullanım Alanları.  
 Anwendungsbereiche von glänzenden Produkten.  
 Domaines d'utilisation des produits polis.



**\*Not recommended in areas with heavy pedestrian traffic.**  
 Yoğun yaya trafiği olan alanlarda önerilmez.  
 In Gebieten mit starkem Fußgängerverkehr nicht zu empfehlen.  
 Non recommandé dans les zones à fort trafic piétonnier.

**Usage Areas of Matte and Semi-Polished Products.**  
 Mat ve Yarı Parlak Ürünlerin Kullanım Alanları.  
 Anwendungsbereiche von Matten und Halb Glänzenden Produkten.  
 Domaines d'utilisation des produits Mats et Semi Polis.



**Usage Areas of Polished Products.**  
 Parlak Ürünlerin Kullanım Alanları.  
 Anwendungsbereiche von glänzenden Produkten.  
 Domaines d'utilisation des produits polis.



**\*Not recommended in areas with heavy pedestrian traffic.**  
 Yoğun yaya trafiği olan alanlarda önerilmez.  
 In Gebieten mit starkem Fußgängerverkehr nicht zu empfehlen.  
 Non recommandé dans les zones à fort trafic piétonnier.







# Extra Wood



**GS-N9021**  
Oak / Meşe / Eiche / Chên  
20x120cm / 8"x48"



**GS-N9023**  
Walnut / Ceviz / Walnuss / Noyer  
20x120cm / 8"x48"



**GS-N9024**  
Venge / Venge / Venge / Venge  
20x120cm / 8"x48"



**GS-N9032**  
Grey / Gri / Grau / Gris  
20x120cm / 8"x48"



**Extra Wood**

Codes / Kodlar / Codes / Codes

Color Renk Farbe Couleur	Surface Yüzey Oberfläche Surface	20x120cm 8"x48"
Oak Meşe Eiche Chên	Matte Mat Matt Mat	GS-N9021
Walnut Ceviz Walnuss Noyer	Matte Mat Matt Mat	GS-N9023
Venge Venge Venge Venge	Matte Mat Matt Mat	GS-N9024
Grey Gri Grau Gris	Matte Mat Matt Mat	GS-N9032



# Forest







**GS-N5000** / 15x90cm / 6"x36"  
Poplar / Kavak / Pappel / Peuplier



**GS-N5002** / 15x90cm / 6"x36"  
Chestnut / Kestane / Kastaine / Châtaignier



**GS-N5001** / 15x90cm / 6"x36"  
Cedar / Sedir / Zeder / Cèdre



**GS-N5003** / 15x90cm / 6"x36"  
Black Pine / Karaçam / Schwarzföhre / Pin de Salzmann



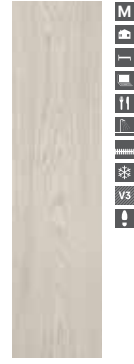
**Forest**

Codes / Kodlar / Codes / Codes

Color	Surface		Slip Resistance
Renk	Yüzey		Kaymazlık
Farbe	Oberfläche	<b>15x90cm</b>	Gleitwiderstand
Couleur	Surface	6"x36"	Antidérapant
<b>Poplar</b>	<b>Matte</b>		
Kavak	Mat	GS-N5000	R 9
Pappel	Matt		
Peuplier	Mat		
<b>Chestnut</b>	<b>Matte</b>		
Kestane	Mat	GS-N5002	R 9
Kastaine	Matt		
Châtaignier	Mat		
<b>Cedar</b>	<b>Matte</b>		
Sedir	Mat	GS-N5001	R 9
Zeder	Matt		
Cèdre	Mat		
<b>Black Pine</b>	<b>Matte</b>		
Karaçam	Mat	GS-N5003	R 9
Schwarzföhre	Matt		
Pin de Salzmann	Mat		

# Soft Nordic





**GAS-D3655**  
15x60cm / 6"x24"  
White  
Beyaz  
Weiß  
Blanc



**GAS-D3654**  
15x60cm / 6"x24"  
Pearl  
İnci  
Perle  
Perle



**GAS-D3653**  
15x60cm / 6"x24"  
Cappucino  
Cappucino  
Cappucino  
Cappucino

**Soft Nordic**

Codes / Kodlar / Codes / Codes

Color Renk Farbe Couleur	Surface Yüzey Oberfläche Surface	15x60cm 6"x24"	Slip Resistance Kaymazlık Gleitwiderstand Antidérapant
White Beyaz Weiß Blanc	Matte Mat Matt Mat	GS-D3655 GAS-D3653	R-9 R-10
Pearl İnci Perle Perle	Matte Mat Matt Mat	GS-D3654 GAS-D3654	R-9 R-10
Cappucino	Matte Mat Matt Mat	GS-D3653	R-9





# Mediterraneo



**GS-N8106** / 60x60cm / 24"x24"  
White / Beyaz / Weiß / Blanc



**GS-N8107** / 60x60cm / 24"x24"  
Bone / Kemik / Knochen / Os



**GS-N8108** / 60x60cm / 24"x24"  
Light Gray / Açık Gri / Hellgrau / Grisaille



**GS-N8109** / 60x60cm / 24"x24"  
Dark Grey / Koyu Gri / Dunkel Grau / Gris Foncé

**Mediterraneo**

Codes / Kodlar / Codes / Codes

Color Renk Farbe Couleur	Surface Yüzey Oberfläche Surface	60x60cm 24"x24"	33x33cm 13"x13"	30x30cm (5x5) 12"x12"	30x60cm 12"x24"	Slip Resistance Kaymazlık Gleitwiderstand Antidérapant
<b>White</b> Beyaz Weiß Blanc	<b>Matte</b> Mat Matt Mat	GS-N8106	—	GS-O330	GS-N7499	—
<b>White Antislip</b> Beyaz Antislip Weiß Antileitschutz Blanc Antidérapant	<b>Matte</b> Mat Matt Mat	—	GAS-N4763	—	—	R11
<b>Bone</b> Kemik Hellbeige Os	<b>Matte</b> Mat Matt Mat	GS-N8107	GS-N4764	—	GS-N7520	—
<b>Bone Antislip</b> Kemik Antislip Hellbeige Antileitschutz Os Antidérapant	<b>Matte</b> Mat Matt Mat	—	GAS-N4764	—	—	R11
<b>Light Gray</b> Açık Gri Hellgrau Grisaille	<b>Matte</b> Mat Matt Mat	GS-N8108	GS-N4765	—	GS-N7521	—
<b>Dark Gray</b> Koyu Gri Dunkelgrau Gris Foncé	<b>Matte</b> Mat Matt Mat	—	GS-N4766	GS-O333	GS-N7522	—

# Provenza



**GS-N4301**  
33x33cm / 13"x13"  
Beige / Bej / Beige / Beige



**GS-N4302**  
33x33cm / 13"x13"  
Khaki / Haki / Khaki / Kaki



**GS-N4303**  
33x33cm / 13"x13"  
Grey / Gri / Grau / Gris



**GS-N4317**  
33x33cm / 13"x13"  
Mix Decor Beige-Grey-Khaki  
Mix Dekor Bej-Gri-Haki  
Mix Dekor Beige-Grau-Khaki  
Mixte Décor Beige-Gris-Kaki





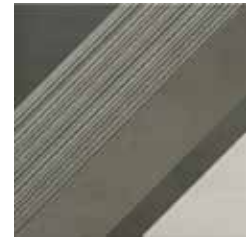
**GS-N4304**  
33x33cm / 13"x13"  
Ice / Buz / Eis / Blanc



**GS-N4303**  
33x33cm / 13"x13"  
Grey / Gri / Grau / Gris



**GS-N4305**  
33x33cm / 13"x13"  
Anthracite / Antrasit / Anthrazit / Anthracite



**GS-N4318**  
33x33cm / 13"x13"  
Mix Dekor Ice-Grey-Anthracite  
Mix Dekor Buz-Gri-Antrasit  
Mix Dekor Eis-Grau-Anthrazit  
Mix Dekor Ice-Gris-Anthracite

**Provenza**

Codes / Kodlar / Codes / Codes

Color Renk Farbe Couleur	Surface Yüzey Oberfläche Surface	33x33cm 13"x13"	30x60cm 12"x24"	Mix Dekor / Mix Dekor Mix Dekor / Mix Décor 33x33cm 13"x13"
<b>Beige</b> Bej Beige Beige	<b>Matte</b> Mat Matt Mat	GS-N4301	GS-N7134	—
<b>Khaki</b> Haki Khaki Kaki	<b>Matte</b> Mat Matt Mat	GS-N4302	GS-N7132	—
<b>Grey</b> Gri Grau Gris	<b>Matte</b> Mat Matt Mat	GS-N4303	GS-N7133	—
<b>Ice</b> Buz Eis Ice	<b>Matte</b> Mat Matt Mat	GS-N4304	GS-N7130	—
<b>Anthracite</b> Antrasit Anthrazit Anthracite	<b>Matte</b> Mat Matt Mat	GS-N4305	GS-N7131	—
<b>Beige - Grey - Khaki Dekor</b> Bej - Gri - Haki Dekor Beige - Grau - Khaki Dekor Beige - Gris - Kaki Dekor	<b>Matte</b> Mat Matt Mat	—	—	GS-N4317
<b>Ice - Grey - Anthracite Dekor</b> Buz - Gri - Antrasit Dekor Eis - Grau - Anthrazi Dekor Ice - Gris - Anthracite Dekor	<b>Matte</b> Mat Matt Mat	—	—	GS-N4318





GS-D7280 / 60x60cm / 24"x24"  
 GS-D6394 / 45x45cm / 18"x18"  
 GS-D7190 / 30x60cm / 12"x24"  
 Bone / Kemik / Knochen / Os



GS-D7282 / 60x60cm / 24"x24"  
 GS-D6396 / 45x45cm / 18"x18"  
 GS-D7192 / 30x60cm / 12"x24"  
 Grey / Gri / Grau / Gris



GS-D7281 / 60x60cm / 24"x24"  
 GS-D6395 / 45x45cm / 18"x18"  
 GS-D7191 / 30x60cm / 12"x24"  
 Brown / Kahve / Braun / Marron



GS-D7283 / 60x60cm / 24"x24"  
 GS-D6397 / 45x45cm / 18"x18"  
 GS-D7193 / 30x60cm / 12"x24"  
 Anthracite / Antrasit / Anthrazit / Anthracite

## Loft

Codes / Kodlar / Codes / Codes

Color	Surface	60x60cm	45x45cm	30x60cm	Slip Resistance
Renk	Yüzey				Kaymazlık
Farbe	Oberfläche	24"x24"	18"x18"	12"x24"	Gleitwiderstand
Couleur	Surface				Antidérapant
Bone	Matte				
Kemik	Mat	GS-D7280	GS-D6394	GS-D7190	---
Knochen	Mat				
Os	Mat				
Grey	Matte				
Gri	Mat	GS-D7282	GS-D6396	GS-D7192	---
Grau	Mat				
Gris	Mat				
Brown	Matte				
Kahve	Mat	GS-D7281	GS-D6395	GS-D7191	---
Braun	Mat				
Marron	Mat				
Anthracite	Matte				
Antrasit	Mat	GS-D7283	GS-D6397	GS-D7193	---
Anthrazit	Mat				
Anthracite	Mat				





# Momentum



GS-D7701 / 60x60cm / 24"x24"  
 GS-D6552 / 45x45cm / 18"x18"  
 GS-D7302 / 33x60cm / 12"x24"  
 GS-D4684 / 33x33cm / 13"x13"  
 Bone / Kemik / Hellbeige / Os



GS-D6553 / 45x45cm / 18"x18"  
 GS-D4685 / 33x33cm / 13"x13"  
 Cream / Krem / Creme / Crème



GS-D7703 / 60x60cm / 24"x24"  
 GS-D6554 / 45x45cm / 18"x18"  
 GS-D7304 / 33x60cm / 12"x24"  
 GS-D4686 / 33x33cm / 13"x13"  
 Grey / Gri / Grau / Gris



**Momentum**

Codes / Kodlar / Codes / Codes

Color	Surface	60x60cm	30x60cm	45x45cm	33x33cm	Slip Resistance
Renk	Yüzeý					Kaymazlık
Farbe	Oberfläche	24"x24"	12"x24"	18"x18"	13 <sup>2</sup> / <sub>5</sub> "x13 <sup>2</sup> / <sub>5</sub> "	Gleitwiderstand
Couleur	Surface					Antidérapant
Bone	Matte / Mat	GS-D7701	GS-D7302	GS-D6552	GS-D4684	—
Kemik	Matt / Mat					
Hellbeige	Antislip / Antislip	—	—	—	GAS-D4684	R10
Os	Antigleitschutz / Antidérapant					
Cream	Matte / Mat	—	—	GS-D6553	GS-D4685	—
Krem	Matt / Mat					
Creme	Antislip / Antislip	—	—	—	—	—
Crème	Antigleitschutz / Antidérapant					
Grey	Matte / Mat	GS-D7703	GS-D7304	GS-D6554	GS-D4686	—
Gri	Matt / Mat					
Grau	Antislip / Antislip	—	—	—	GAS-D4686	R10
Gris	Antigleitschutz / Antidérapant					
Black	Matte / Mat	—	—	—	—	—
Siyah	Matt / Mat					
Schwarz	Antislip / Antislip	—	—	—	—	—
Noir	Antigleitschutz / Antidérapant					









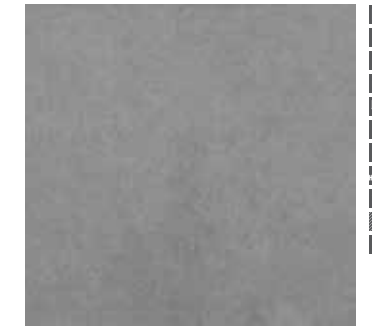
GAS-D7745 / 60x60cm / 24"x24"  
 GS-D7112 / 30x60cm / 12"x24" UPEC  
 GAS-D7400 / 30x60cm / 12"x24"  
 GS-D6730R / 45x45cm / 18"x18"  
 GAS-D4681 / 33x33cm / 13 1/5"x13 1/5"  
 White / Beyaz / Weiß / Blanc



GS-D7749 / 60x60cm / 24"x24" UPEC  
 GS-D7115 / 30x60cm / 12"x24" UPEC  
 GAS-D4755 / 33x33cm / 13 1/5"x13 1/5" UPEC  
 Cream / Krem / Crème / Crème



GS-D7750 / 60x60cm / 24"x24"  
 GAS-D4750 Antislip / 33x33cm / 13 1/5"x13 1/5"  
 GAS-D4760 Antislip / 33x33cm / 13 1/5"x13 1/5"  
 GAS-D4750R Antislip / 33x33cm / 13 1/5"x13 1/5"  
 Taupe



GS-D7402 / 30x60cm / 12"x24"  
 GS-D7113 / 30x60cm / 12"x24" UPEC  
 GS-D6429R / 45x45cm / 18"x18"  
 GAS-D6764 Antislip / 45x45cm / 18"x18"  
 GAS-D4871 / 33x33cm / 13 1/5"x13 1/5"  
 GAS-D4747 Antislip / 33x33cm / 13 1/5"x13 1/5"  
 GAS-D4753 Antislip / 33x33cm / 13 1/5"x13 1/5"  
 Light Grey / Açık Gri  
 Hellgrau / Gris Clair



GS-D7746 / 60x60cm / 24"x24"  
 GS-D6746 / 45x45cm / 18"x18" UPEC  
 GS-D4746 / 33x33cm / 13 1/5"x13 1/5" UPEC  
 Beige / Bej / Beige / Beige



GS-D7751 / 60x60cm / 24"x24" UPEC  
 GS-D7116 / 30x60cm / 12"x24" UPEC  
 GAS-D6744 Antislip / 45x45cm / 18"x18"  
 GS-D4752 / 33x33cm / 13 1/5"x13 1/5" UPEC  
 Ash / Kül / Asche / Cendre



GS-D7748 / 60x60cm / 24"x24" UPEC  
 GS-D7160R / 60x60cm / 24"x24"  
 GS-D7403 / 30x60cm / 12"x24"  
 GS-D7114 / 30x60cm / 12"x24" UPEC  
 GS-D6953R / 45x45cm / 18"x18"  
 GS-D4870 / 33x33cm / 13 1/5"x13 1/5"  
 GAS-D4752 / 33x33cm / 13 1/5"x13 1/5"  
 GS-D4748 / 33x33cm / 13 1/5"x13 1/5" UPEC  
 Dark Grey / Koyu Gri  
 Dunkelgrau / Gris Foncé

## Soft

Codes / Kodlar  
Codes / Codes

Color Renk Farbe Couleur	Surface Yüzey Oberfläche Surface	60x60cm 24"x24"	45x45cm 18"x18"	30x60cm 12"x24"	33x33cm 13 <sup>1/5</sup> "x13 <sup>1/5</sup> "	Slip Resistance Kaymazlık Gleitwiderstand Antidérapant
White Beyaz Weiß Blanc	Matte Mat Matt Mat	GS-D7745 GS-D7745 (UPEC)	GS-D6745 (UPEC)	GS-D7112 (UPEC)	GS-D4745 (UPEC)	—
White Antislip Beyaz Antislip Weiß Antigleitschutz Blanc Antidérapant	Matte Mat Matt Mat	GAS-D7745	—	GAS-D7400	—	R9
Beige Bej Beige Beige	Matte Mat Matt Mat	GS-D7746 GS-D7746 (UPEC)	GS-D6746 (UPEC)	—	GS-D4746 (UPEC)	—
Cream Krem Creme Crème	Matte Mat Matt Mat	GS-D7749 (UPEC)	GS-D6749 (UPEC)	GS-D7115 (UPEC)	GS-D4755 (UPEC)	—
Ash Kül Asche Cendre	Matte Mat Matt Mat	GS-D7751 GS-D7751 (UPEC)	—	GS-D7116 (UPEC)	GS-D4752 (UPEC)	—
Ash Antislip Kül Antislip Asche Antigleitschutz Cendre Antidérapant	Matte Mat Matt Mat	—	GAS-D6744	—	GAS-D4756	R9 / R11
Taupe	Matte Mat Matt Mat	GS-D7750	—	—	—	—
Taupe Antislip	Matte Mat Matt Mat	—	—	—	GAS-D4750 GAS-D4760	R9 / R11
Light Grey Açık Gri Hellgrau Gris Clair	Matte Mat Matt Mat	GS-D7747 GS-D7747 (UPEC)	GS-D6429 GS-D6747 (UPEC)	GS-D7402 GS-D7113 (UPEC)	GS-D4871 (UPEC)	—
Light Grey Antislip Açık Gri Antislip Hellgrau Antigleitschutz Gris Clair Antidérapant	Matte Mat Matt Mat	—	GS-D6764	—	GAS-D4747 GAS-D4753	R10 / R11
Dark Grey Koyu Gri Dunkelgrau Gris Foncé	Matte Mat Matt Mat	GS-D7748 GS-D7748 (UPEC)	GS-D6953R GS-D6748 (UPEC)	GS-D7403 GS-D7114 (UPEC)	—	—
Dark Grey Antislip Koyu Gri Antislip Dunkelgrau Antigleitschutz Gris Foncé Antidérapant	Matte Mat Matt Mat	—	—	—	GAS-D4752 GS-D4748 (UPEC)	R11

## Soft

Codes / Kodlar  
Codes / Codes

Color Renk Farbe Couleur	Surface Yüzey Oberfläche Surface	8x60cm 3 <sup>9</sup> "x24"	8x45cm 3 <sup>9</sup> "x18"	8x33cm 3 <sup>9</sup> "x13 <sup>1/5</sup> "	Slip Resistance Kaymazlık Gleitwiderstand Antidérapant
White Beyaz Weiß Blanc	Matte Mat Matt Mat	—	SD-752	—	—
Cream Krem Creme Crème	Matte Mat Matt Mat	GS-O7784	—	—	—
Ash Kül Asche Cendre	Matte Mat Matt Mat	GS-O7785	—	GS-O778	—
Light Grey Açık Gri Hellgrau Gris Clair	Matte Mat Matt Mat	—	GS-O6747	GS-O753 SD-705	—
Dark Grey Koyu Gri Dunkelgrau Gris Foncé	Matte Mat Matt Mat	GS-O7787	GS-O6775	SD-706	—

## Technical Specifications

## Teknik Özellikler

## Technische Spezifikationen

## Caractéristiques Techniques

## Tables of Nominal and Actual Size

### Anma ve Çalışma Ebadı Tabloları

### Nenn- und Istgrößentabellen

### Les tables de dimensions nominales et réelles

Glazed Granite / Sırlı Granit / Glasierter Granit / Granit Émaillé	
Anma Ebadı (cm/inches) Nominal Size (cm/inches) Nenngröße (cm/inches) Dimension Nominale (cm/inches)	Work Size (mm) / Çalışma Ebadı (mm) Istgröße (mm) / Dimension de Travail (mm)
15x60cm / 6"x24"	147,5x604
	147,5x602,6
	147,5x600,8
	147,5x599,0
	147,5x597,2
	147,5x595,4
15x90cm / 6"x36"	147,5x904,0
	147,5x902,0
	147,5x900,0
	147,5x898,0
	147,5x896,0
45x45cm / 18"x18"	450,9x450,9
	449,7x449,7
	448,5x448,5
	447,3x447,3
	446,1x446,1
60x60cm / 24"x24"	601,6x601,6
	600,3x600,3
	599,0x599,0
	597,7x597,7
	596,4x596,4
30x60cm / 12"x24"	299,4 (±0,6)x602,0
	299,4 (±0,6)x600,5
	297,0 (±1,0)x599,0
	297,0 (±1,0)x597,5
	297,0 (±1,0)x596,0
33x33cm / 12,63"x12,63"	332,0x332,0
	331,0x331,0
	330,0x330,0
	329,0x329,0
	328,0x3298,0
	327,0x327,0
20x20cm / 7,7"x7,7"	201,0x201,0
	200,0x200,0
	199,0x199,0
	198,0x198,0



**Glazed Porcelain Floor Tiles Packaging Details / Sırlı Porselen Yer Karoları Paketleme Bilgileri**  
*Verpackungsdetails der glasierten Bodenfliesen / Détails d'Emballage des Carreaux de Sol en Porcelaine Émaillée*

Size / Ebat Dimension / Dimensions	Thickness Kalınlık Dicke Épaisseur (mm)	Tiles Per Box Kutudaki Karo Adedi Stückanzahl Pro Box Quantité De Carreaux Par Boite (Pcs / Ad / Stk / Nb)	Squaremeters Per Box Kutudaki Karo Miktarı Quadratmeter Pro Box Surface De Carreaux Par Boite (m <sup>2</sup> - lm) / (m <sup>2</sup> - mtül) (m <sup>2</sup> - lfm) / (m <sup>2</sup> - mct)	Squaremeters Per Pallet Paletteki Karo Miktarı Quadratmeter Pro Palette Surface de Carreaux Par Palette (m <sup>2</sup> - lm) / (m <sup>2</sup> - mtül) (m <sup>2</sup> - lfm) / (m <sup>2</sup> - mct)	Boxes Per Pallet Paletteki Kutu Adedi Box-Anzahl Pro Palette Quantité De Carreaux Par Palette (Pcs / Ad / Stk / Nb)
60x60cm / 24"x24"	8,5	4	1,44	46,08	32
59x59cm R / 23,2"x23,2" R	8,5	4	1,40	44,8	32
30x60cm / 12"x24"	8,5	8	1,44	57,60	40
45x45cm / 18"x18"	8	8	1,62	84,24	52
44x44cm R / 17,3"x17,3" R	8	8	1,55	80,60	52
15x90cm / 6"x36"	9	8	1,08	45,36	42
15x60cm / 6"x24"	8,5	16	1,44	72	50
20x20cm / 8"x8"	9	20	0,8	70,40	88
33x33cm / 13"x13"	8	13	1,42	65,32	46
33x38cm / 13"x15"	8	13	1,22	43,92	36
20x120cm / 8"x48"	10	4	0,96	31	32

**Porcelain Tiles Packaging Details / Porselen Karolar Paketleme Bilgileri /**  
*Verpackungsdetails der glasierten Porzellanfliesen / Détails d'Emballage des Carreaux de Porcelaine*

Size / Ebat Dimension / Dimensions	Thickness Kalınlık Dicke Épaisseur (mm)	Tiles Per Box Kutudaki Karo Adedi Stückanzahl Pro Box Quantité De Carreaux Par Boite (Pcs / Ad / Stk / Nb)	Squaremeters Per Box Kutudaki Karo Miktarı Quadratmeter Pro Box Surface De Carreaux Par Boite (m <sup>2</sup> - lm) / (m <sup>2</sup> - mtül) (m <sup>2</sup> - lfm) / (m <sup>2</sup> - mct)	Squaremeters Per Pallet Paletteki Karo Miktarı Quadratmeter Pro Palette Surface de Carreaux Par Palette (m <sup>2</sup> - lm) / (m <sup>2</sup> - mtül) (m <sup>2</sup> - lfm) / (m <sup>2</sup> - mct)	Boxes Per Pallet Paletteki Kutu Adedi Box-Anzahl Pro Palette Quantité De Carreaux Par Palette (Pcs / Ad / Stk / Nb)
30x60cm / 12"x24"	9	8	1,44	46,08	32
60x60cm / 24"x24"	9	4	1,44	43,2	30
60x120cm / 24"x48"	9	2	1,44	43,2	30
40x80cm / 16"x32"	10	4	1,28	51,2	40
80x80cm / 32"x32"	10	2	1,28	51,2	40
80x160cm / 32"x64"	10	1	1,28	46,08	36
12x120cm / 4 7/8"x48"	9	5	0,72	46,08	64
20x120cm / 8"x48"	9	4	0,96	51,84	54

**Wall Tiles Packaging Details / Duvar Karoları Paketleme Bilgileri**  
*Verpackungsdetails der Wandfliesen / Détails d'Emballage des Carreaux de Mur*

Size / Ebat Dimension / Dimensions	Thickness Kalınlık Dicke Épaisseur (mm)	Tiles Per Box Kutudaki Karo Adedi Stückanzahl Pro Box Quantité De Carreaux Par Boite (Pcs / Ad / Stk / Nb)	Squaremeters Per Box Kutudaki Karo Miktarı Quadratmeter Pro Box Surface De Carreaux Par Boite (m <sup>2</sup> - lm) / (m <sup>2</sup> - mtül) (m <sup>2</sup> - lfm) / (m <sup>2</sup> - mct)	Squaremeters Per Pallet Paletteki Karo Miktarı Quadratmeter Pro Palette Surface de Carreaux Par Palette (m <sup>2</sup> - lm) / (m <sup>2</sup> - mtül) (m <sup>2</sup> - lfm) / (m <sup>2</sup> - mct)	Boxes Per Pallet Paletteki Kutu Adedi Box-Anzahl Pro Palette Quantité De Carreaux Par Palette (Pcs / Ad / Stk / Nb)
33x110cm R / 12,9"x43,3" R Relief - Rolyefli - Mit Relief - Avec relief	10	4	1,45	60,98	42
33x110cm R / 12,9"x43,3" R Plain - Düz - Eben - Droit	10	4	1,45	78,3	54
29,5x89cm R / 11,6"x35" R Relief - Rolyefli - Mit Relief - Avec relief	10	4	1,05	44,10	42
29,5x89cm R / 11,6"x35" R Plain - Düz - Eben - Droit	10	4	1,05	54,60	52
Wall Tile Rectified Duvar Karosu Rektifiyeli Wandfliese Rektifiziert Carreaux de Murs Rectifiés					
24x74cm R / 9,4"x29,1" R Plain - Düz - Eben - Droit	9	10	1,78	63,90	36
24x74cm R / 9,4"x29,1" R Relief - Rolyefli - Mit Relief - Avec relief	9	8	1,43	57,60	36
29x59cm R / 11,4"x23,2" R Plain - Düz - Eben - Droit	8	10	1,71	54,75	32
29x59cm R / 11,4"x23,2" R Relief - Rolyefli - Mit Relief - Avec relief	8	9	1,54	49,28	32
29x59cm R / 11,4"x23,2" R Relief - Rolyefli - Mit Relief - Avec relief	8	8	1,37	43,84	32
25x75cm / 10"x30" Relief - Rolyefli - Mit Relief - Avec relief	9	8	1,50	54,00	36
25x75cm / 10"x30" Plain - Düz - Eben - Droit	9	10	1,88	67,50	36
Wall Tile Duvar Karosu Wandfliese Carreaux de Mur					
30x60cm / 12"x24" Plain - Düz - Eben - Droit	8	10	1,80	57,60	32
30x60cm / 12"x24" Relief - Rolyefli - Mit Relief - Avec relief	8	9	1,62	51,84	32
30x60cm / 12"x24" Relief - Rolyefli - Mit Relief - Avec relief	8	8	1,44	46,08	25
10x30cm / 3"x12" Relief - Rolyefli - Mit Relief - Avec relief	8	30	0,90	64,80	72
10x40cm / 3"x15" Relief - Rolyefli - Mit Relief - Avec relief	8	25	1,00	70,00	70

**Decor Packing Details / Dekor Paketleme Bilgileri**  
*Verpackungsdetails der Dekoren/ Détails d'Emballage des Décors*

Size / Ebat Dimension / Dimension	Thickness / Kalınlık Dicke / Épaisseur (mm)	Box Information / Kutu Bilgileri Box-Informationen / Informations sur la boîte		Pallet Information / Palet Bilgileri Paletten informationen / Informations sur la palette	
		Tiles Per Box Kutudaki Karo Adedi Stückanzahl Pro Box Quantité De Carreaux Par Boite (Pcs / Ad / Stk / Nb)	Squaremeters Per Box Kutudaki Karo Miktarı Quadratmeter Pro Box Surface De Carreaux Par Boite (m <sup>2</sup> - lm) / (m <sup>2</sup> - mtül) (m <sup>2</sup> - lfm) / (m <sup>2</sup> - mct)	Squaremeters Per Pallet Paletteki Karo Miktarı Quadratmeter Pro Palette Surface de Carreaux Par Palette (m <sup>2</sup> - lm) / (m <sup>2</sup> - mtül) (m <sup>2</sup> - lfm) / (m <sup>2</sup> - mct)	Boxes Per Pallet Paletteki Kutu Adedi Box-Anzahl Pro Palette Quantité De Carreaux Par Palette (Pcs / Ad / Stk / Nb)
29x59 R	8	4	0,68	16,44	24
24x74 R	9	5	0,88	35,2	40
29x59 R	8	8	1,37	28,77	21
29,5x89 R	10	4	1,05	40,00	40
33x110 R	12	4	1,45	42,00	42
29,5x89 R	10	4	1,08	18,90	18
30x60	8	4	0,72	17,28	24
40x80 R	10	4	1,28	53,76	42

**PORCELAIN TILE SPECIFICATIONS | PORSELEN KAROLAR TEKNİK ÖZELLİKLERİ**

**PORZELLAN FLIESEN-SPEZIFIKATIONEN | SPÉCIFICATIONS TECHNIQUES DES CARREAUX DE PORCELAINE**

Technical Specifications / Teknik Özellikler Technische Eigenschaften / Caractéristiques techniques	TS-EN 14411 / ANNEX G UGL GROUP B1a Turkish & European Standards / Türk ve Avrupa Standardı Türkische & Europäische Standards / Normes Turques et Européennes			Kalebodur Test Results / Test Sonuçları Test Ergebnisse / Résultats des tests	TS-EN
	Requirements for nominal size N ; Nominal boyutu N				
	7cm ≤ N < 15 cm	(%)	N ≥ 15 cm		
Length and width / Uzunluk ve genişlik / Länge und Breite / Longueur et largeur (cm)	± 0,9 mm	± 0,6 %	± 2,0 mm	±0.3%	ISO 10545-2
Thickness / Kalınlık / Dicke / Épaisseur (%)	± 0,5 mm	± 5 %	± 0,5 mm	±4%	ISO 10545-2
Rectangularity / Gönyeden Sapma / Rechtwinkligkeit / Orthogonalité (%)	± 0,75 mm	± 0,5 %	± 2,0 mm	±0.3%	ISO 10545-2
Straightness of Sides / Kenar Düzgünlüğü / Geradheit der Seiten / Rectitude des arêtes (%)	± 0,75 mm	± 0,5 %	± 1,5 mm	±0.2%	ISO 10545-2
Surface Flatness / Düzlemden Sapma / Flachheit der Oberfläche / Planéité (%)	± 0,75 mm	± 0,5 %	± 2,0 mm	±0.3%	ISO 10545-2
Water Absorbion / Su Emme / Wasser Aufnahme / Absorption d'eau (%)	E ≤ 0,5 % Individual max.0,6% / E ≤ % 0,5 Tek olarak max.%0,6 E ≤ %0,5 Individuell max.% 0,6 / E ≤ 0,5 % Par carreau max. 0,6 %			<0,5%	ISO 10545-3
<b>Breaking strength / Kırılma kuvveti / Bruchkraft / Force de rupture</b>	Thickness ≥ 7,5 mm / Kalınlık ≥ 7,5 mm; Not less than 1300 // En az 1300 Dicke < 7,5 mm / Épaisseur ≥ 7,5 mm ; Nicht weniger als 1300 // Minimum 1300			1800 N	ISO 10545-4
	Thickness < 7,5 / Kalınlık < 7,5 mm; Not less than 700 // En az 700 Dicke < 7,5 mm / Épaisseur < 7,5 mm ; Nicht weniger als 700 // Minimum 700			-	ISO 10545-4
Bending Resistance / Eğilme Dayanımı / Biegefestigkeit / Résistance à la flexion (n/mm²)	Min.35 Individual min.32 / Min. 35 Tek olarak min.32 Min. 35 Individuell Min.32 / Min. 35 par carreau Min.32			Min. 40 N/mm²	ISO 10545-4
Impact resistance / Çarpma Dayanımı / Schlagfestigkeit / Résistance à l'impact	Test method available / Mevcut test metodu Vorhandene Testmethode / Méthode de test disponible			Affirmative / Uygun Positiv / Conforme	ISO 10545-5
Resistance to Deep abrasion-Unglazed Tiles Only Sırsız karoların derin aşınmaya dayanımı Widerstandsfähigkeit unglasierter Fliesen gegen tiefe Kratzer / Carreaux non émaillés – Résistance à l'abrasion profonde	Max.175 mm³			<140 mm³	ISO 10545-6
Linear Thermal Expansion Coefficient / Isı Genleşme Katsayısı Lineare Wärmeausdehnungskoeffizient / Coefficient linéaire de dilatation thermique	Test method available / Mevcut test metodu Vorhandene Testmethode / Méthode de test disponible			6x10 <sup>6</sup>	ISO 10545-8
Resistance to Thermal Shock / Isı Şokuna Dayanıklılık Widerstandsfähigkeit gegen Wärmeshock / Résistance au choc thermique	Test method available / Mevcut test metodu Vorhandene Testmethode / Méthode de test disponible			Affirmative / Uygun Positiv / Conforme	ISO 10545-9
Frost Resistance / Donma Dayanıklılık / Frostbeständigkeit / Résistance au gel	Required / İstenir / Erforderlich / Requis			Resistant / Dayanıklı Résistant / Résistant	ISO 10545-12
<b>Resistance to chemical / Kimyasallara Dayanım Chemikalienbeständigkeit / Résistance chimique</b>					
Resistance to low concentrations of acids and alkalis Düşük konsantrasyonlu asit ve alkalilere dayanım Widerstandsfähigkeit gegen Säuren- und Alkali niedriger Konzentration / Résistance à de faibles concentrations d'acides et d'alcalis	Manufacturer to state classification / Üretici sınıflandırır Durch den Hersteller zu klassifizieren / A classier par le fabricant			LB	ISO 10545-13
Resistance to high concentrations of acids and alkalis Yüksek konsantrasyonlu asit ve alkalilere dayanım Widerstandsfähigkeit gegen Säuren- und Alkali hoher Konzentration / Résistance à de hautes concentrations d'acides et d'alcalis	Test method available / Mevcut test metodu Vorhandene Testmethode / Méthode de test disponible			HB	ISO 10545-13
Resistance to household chemicals and swimming pool salts Ev kimyasallarına ve yüzme havuzu tuzlarına dayanım Widerstandsfähigkeit gegen Haushaltschemikalien und Poolsalze / Résistance aux produits chimiques domestiques et au sel de piscine	Min.UB			A	ISO 10545-13
<b>Resistance to Staining / Lekelenmeye Dayanıklılık Widerstandsfähigkeit gegen Beschmutzung / Résistance aux taches</b>	Test method available / Mevcut test metodu Vorhandene Testmethode / Méthode de test disponible			Affirmative / Uygun Positiv / Conforme	ISO 10545-14
Ramp Slip resistance (Oil / Wet) / Ramp kayma testi (Yağlı / Islak) (Gerektiğinde) Rampengleitwiderstand (Öliger/Nass) / Test du glissement à rampe (huileux/mouillé)	Where required / Gerektiğinde / Wo erforderlich / Là où requis			R= 9; 10; 11; 12; 13 Class / Sınıf : A; B; C Klasse / Classe : A; B; C	(Special / Özel Spezial/ Spécial) DIN 51130 DIN 51097

Kaleseramik Çanakale Kalebodur Seramik Sanayi A.Ş. 17430 Çan - Çanakale / Türkiye

TS-EN 14411 ANNEX G UGL GROUP B1a

Dry-pressed ceramic tiles for external and internal flooring / Kuru presleme ile üretilmiş dış ve iç mekan seramik yer karoları

Mit dem Trockenpressverfahren hergestellte Keramikfliesen für den Innen- und Aussenbereich / Carreaux de céramique pressés à sec pour carrelage de sol intérieur et extérieur

Characteristics / Karakteristikler / Eigenschaften / Caractéristiques	Declared values / Beyan edilen değerler / Deklarierte Werte / Valeurs déclarées
Fire Resistance / Yangına Dayanım / Feuerbeständigkeit / Résistance au feu	A1F1 (Without testing 96/603 EC as amended / 96/603/EC doğrultusunda test edilmeksizin) A1F1 (Ohne Test in der Ausrichtung 96/603/EC / Sans test selon 96/603 EC)
Rupture Resistance / Kırılma Dayanımı / Bruchfestigkeit / Force de rupture	>1300 N - TS EN ISO 10545-4
Slip Resistance (for pedestrian circulation areas only) / Kayma Direnci (yaya kullanım alanları için) (gerektiğinde) Gleitwiderstand (Nur für Fußgängerzonen) / Propriétés antiglissantes ( pour les lieux de circulation pédestre) (IF NECESSARY)	R: 9 - 10 - 11 - 12 - 13 / CLASS: A - B - C / DIN 51130 / DIN 51097
Freeze-Thaw Resistance / Donma-Erime Çevrimine Dayanıklılık Frost- Taubeständigkeit / Résistance au cycle gel-fonte	Resistant to frost / Donma dayanıklıdır - TS EN ISO 10545-12 Frostbeständig/ Résistant au gel - TS EN ISO 10545-12
Release of Dangerous Substances (only when required by national laws) Açığa Çıkan Tehlikeli Maddeler (yalnızca ulusal yasalar tarafından istendiğinde) Freigesetzte Schadstoffe (Nur falls durch die nationalen Gesetze erforderlich) Émanations de substances dangereuses (seulement quand exigé par la législation nationale)	NPD
Release of Cadmium / Açığa Çıkan Kadmium Freigesetztes Kadmium / Émanation de cadmium	NPD
Release of Lead / Açığa Çıkan Kurşun / Freigesetztes Blei / Émanation de plomb	NPD

**GLAZED PORCELAIN FLOOR TILES TECHNICAL SPECIFICATIONS | SIRLI GRANİT YER KAROLARI TEKNİK ÖZELLİKLERİ**

**TECHNISCHE EIGENSCHAFTEN VON GLASIERTEN PORZELLAN BODENFLIESEN | CARACTÉRISTIQUES TECHNIQUES DES CARREAUX DE SOL DE PORCELAINE ÉMAILLÉS**

Technical Specifications / Teknik Özellikler Technische Eigenschaften / Caractéristiques techniques	TS-EN 14411 / ANNEX G UGL GROUP B1a Turkish & European Standards / Türk ve Avrupa Standardı Türkische & Europäische Standards / Normes Turques et Européennes			Kalebodur Test Results / Test Sonuçları Test Ergebnisse / Résultats des tests	TS-EN
	Requirements for nominal size N ; Nominal boyutu N				
	7cm ≤ N < 15 cm	(%)	N ≥ 15 cm		
Length and width / Uzunluk ve genişlik / Länge und Breite / Longueur et largeur (cm)	± 0,9 mm	± 0,6 %	± 2,0 mm	±0.3%	ISO 10545-2
Thickness / Kalınlık / Dicke / Épaisseur (%)	± 0,5 mm	± 5 %	± 0,5 mm	±4%	ISO 10545-2
Rectangularity / Gönyeden Sapma / Rechtwinkligkeit / Orthogonalité (%)	± 0,75 mm	± 0,5 %	± 2,0 mm	±0.3%	ISO 10545-2
Straightness of Sides / Kenar Düzgünlüğü / Geradheit der Seiten / Rectitude des arêtes (%)	± 0,75 mm	± 0,5 %	± 1,5 mm	±0.2%	ISO 10545-2
Surface Flatness / Düzlemden Sapma / Flachheit der Oberfläche / Planéité (%)	± 0,75 mm	± 0,5 %	± 2,0 mm	±0.3%	ISO 10545-2
Water Absorbion / Su Emme / Wasser Aufnahme / Absorption d'eau (%)	E ≤ 0,5 % Individual max.0,6% / E ≤ % 0,5 Tek olarak max.%0,6 E ≤ %0,5 Individuell max.% 0,6 / E ≤ 0,5 % Par carreau max. 0,6 %			≤0,5%	ISO 10545-3
<b>Rupture Resistance / Kırılma kuvveti / Bruchkraft / Force de rupture</b>	Thickness ≥ 7,5 mm / Kalınlık ≥ 7,5 mm; Not less than 1300 // En az 1300 Dicke < 7,5 mm / Épaisseur ≥ 7,5 mm ; Nicht weniger als 1300 // Minimum 1300			>1300 N	ISO 10545-4
	Thickness < 7,5 / Kalınlık < 7,5 mm; Not less than 700 // En az 700 Dicke < 7,5 mm / Épaisseur < 7,5 mm ; Nicht weniger als 700 // Minimum 700			-	ISO 10545-4
Bending Resistance / Eğilme Dayanımı / Biegefestigkeit / Résistance à la flexion (n/mm²)	Min.35 Individual min.32 / Min. 35 Tek olarak min.32 Min. 35 Individuell Min.32 / Min. 35 par carreau Min.32			Min. 35 N/mm²	ISO 10545-4
Impact resistance / Çarpma Dayanımı / Schlagfestigkeit / Résistance à l'impact	Test method available / Mevcut test metodu Vorhandene Testmethode / Méthode de test disponible			Affirmative / Uygun Positiv / Conforme	ISO 10545-5
Resistance to Deep abrasion-Unglazed Tiles Only Sırsız karoların derin aşınmaya dayanımı Widerstandsfähigkeit unglasierter Fliesen gegen tiefe Kratzer / Carreaux non émaillés – Résistance à l'abrasion profonde	Report abrasion class and cycles passed Gerektiğinde sınıf ve devir olarak belirtilir Wird als Klasse und Umdrehung angegeben Déterminé enterte de classe et de cycle			Sınıf / Class : 1 - 2 - 3 - 4 - 5 Klasse / Classe : 1 - 2 - 3 - 4 - 5	ISO 10545-7*
Linear Thermal Expansion Coefficient / Isı Genleşme Katsayısı Lineare Wärmeausdehnungskoeffizient / Coefficient linéaire de dilatation thermique	Test method available / Mevcut test metodu Vorhandene Testmethode / Méthode de test disponible			6,5x10 <sup>6</sup>	ISO 10545-8
Resistance to Thermal Shock / Isı Şokuna Dayanıklılık Widerstandsfähigkeit gegen Wärmeshock / Résistance au choc thermique	Test method available / Mevcut test metodu Vorhandene Testmethode / Méthode de test disponible			Affirmative / Uygun Positiv / Conforme	ISO 10545-9
Frost Resistance / Donma Dayanıklılık / Frostbeständigkeit / Résistance au gel	Required / İstenir / Erforderlich / Requis			Affirmative / Uygun Positiv / Conforme	ISO 10545-11
Donma Dayanıklılık / Frost Resistance Frostbeständigkeit / Résistance au gel	Required / İstenir / Erforderlich / Requis			Resistant / Dayanıklı Résistant / Résistant	ISO 10545-12
<b>Resistance to chemical / Kimyasallara Dayanım Chemikalienbeständigkeit / Résistance chimique</b>					
Resistance to low concentrations of acids and alkalis Düşük konsantrasyonlu asit ve alkalilere dayanım Widerstandsfähigkeit gegen Säuren- und Alkali niedriger Konzentration / Résistance à de faibles concentrations d'acides et d'alcalis	Manufacturer to state classification / Üretici sınıflandırır Durch den Hersteller zu klassifizieren / A classier par le fabricant			LB	ISO 10545-13
Resistance to high concentrations of acids and alkalis Yüksek konsantrasyonlu asit ve alkalilere dayanım Widerstandsfähigkeit gegen Säuren- und Alkali hoher Konzentration / Résistance à de hautes concentrations d'acides et d'alcalis	Test method available / Mevcut test metodu Vorhandene Testmethode / Méthode de test disponible			HB	ISO 10545-13
Resistance to household chemicals and swimming pool salts Ev kimyasallarına ve yüzme havuzu tuzlarına dayanım Widerstandsfähigkeit gegen Haushaltschemikalien und Poolsalze / Résistance aux produits chimiques domestiques et au sel de piscine	Min.B			A	ISO 10545-13
<b>Resistance to Staining / Lekelenmeye Dayanıklılık Widerstandsfähigkeit gegen Beschmutzung / Résistance aux taches</b>	Min.Class 3 for Glazed Tile / Min. Class 3 Min. Klasse 3 für glasierte Fliesen / Carreaux émaillés Min.Classe 3			Min.Class / Min.Sınıf: 3 Min Klasse / Classe:3	ISO 10545-14
Ramp Slip resistance (Oil / Wet) / Ramp kayma testi (Yağlı / Islak) Rampengleitwiderstand (Öliger/Nass) / Test du glissement à rampe (huileux/mouillé)	When required / Gerektiğinde / Wo erforderlich / Là où requis			R= 9; 10; 11; 12; 13 Class / Sınıf : A; B; C Klasse / Classe : A; B; C	(Special / Özel Spezial/ Spécial) DIN 51130 DIN 51097

Kaleseramik Çanakale Kalebodur Seramik Sanayi A.Ş. 17430 Çan - Çanakale / Türkiye

TS-EN 14411 ANNEX G UGL GROUP B1a

Dry-pressed ceramic tiles for external and internal flooring / Kuru presleme ile üretilmiş dış ve iç mekan seramik yer karoları

Mit dem Trockenpressverfahren hergestellte Keramikfliesen für den Innen- und Aussenbereich / Carreaux de céramique pressés à sec pour carrelage de sol intérieur et extérieur

Characteristics / Karakteristikler / Eigenschaften / Caractéristiques	Declared values / Beyan edilen değerler / Deklarierte Werte / Valeurs déclarées
Fire Resistance / Yangına Dayanım / Feuerbeständigkeit / Résistance au feu	A1F1 (Without testing 96/603 EC as amended / 96/603/EC doğrultusunda test edilmeksizin) A1F1 (Ohne Test in der Ausrichtung 96/603/EC / Sans test selon 96/603 EC)
Rupture Resistance / Kırılma Dayanımı / Bruchfestigkeit / Force de rupture	>1300 N - TS EN ISO 10545-4
Slip Resistance (for pedestrian circulation areas only) / Kayma Direnci (yaya kullanım alanları için) (gerektiğinde) Gleitwiderstand (Nur für Fußgängerzonen) / Propriétés antiglissantes ( pour les lieux de circulation pédestre) (IF NECESSARY)	R: 9 - 10 - 11 - 12 - 13 / CLASS: A - B - C / DIN 51130 / DIN 51097
Freeze-Thaw Resistance / Donma-Erime Çevrimine Dayanıklılık Frost- Taubeständigkeit / Résistance au cycle gel-fonte	Resistant to frost / Donma dayanıklıdır - TS EN ISO 10545-12 Frostbeständig/ Résistant au gel - TS EN ISO 10545-12
Release of Dangerous Substances (only when requested by national legislation) Açığa Çıkan Tehlikeli Maddeler (yalnızca ulusal yasalar tarafından istendiğinde) Freigesetzte Schadstoffe (Nur falls durch die nationalen Gesetze erforderlich) Émanations de substances dangereuses (seulement quand exigé par la législation nationale)	NPD
Release of Cadmium / Açığa Çıkan Kadmium Freigesetztes Kadmium / Émanation de cadmium	NPD
Release of Lead / Açığa Çıkan Kurşun / Freigesetztes Blei / Émanation de plomb	NPD

## GLAZED PORCELAIN FLOOR TILES TECHNICAL SPECIFICATIONS | SIRLI GRANİT YER KAROLARI TEKNİK ÖZELLİKLERİ

### TECHNISCHE EIGENSCHAFTEN VON GLASIERTEN PORZELLAN BODENFLIESEN | CARACTÉRISTIQUES TECHNIQUES DES CARREAUX DE SOL DE PORCELAINE ÉMAILLÉS

#### SHADE VARIATION | RENK TON FARKI REHBERİ

The color shade of tiles may vary to some degree between different production runs or within the same run. At least several pieces from the same run should be reviewed whenever possible to determine acceptable color shade variations. Any questions or concerns about your tile selection should be clarified prior to installation.

**V1= UNIFORM APPEARANCE:** Differences among pieces are minimal, each tile has the same color texture, shade and motif.

**V2= SLIGHT VARIATION:** May have differences in texture and/or patterns of the same color.

General appearances of tiles are quite similar.

**V3= MODERATE VARIATION:** While colors of a single tile will be indicative of the colors to be expected on the other tiles, color density varies significantly. For example "that little bit of color" on one piece of tile may be the primary color on the next piece.

**V4= RANDOM VARIATION:** One tile may have a completely different color than the other. Due to color variation when installed combination of tiles will have a natural appearance and each installation will be unique.

Farklı partiler şeklinde üretilen karolar arasında veya aynı üretim partisindeki karolann kendi aralarında belli derecelerde renk tonlarında farklılıklar oluşur. Kabul edilebilir renk ton farklılıklarını belirlemek için en azından aynı üretim partisine ait karolardan bir miktan mümkün oldukça gözden geçirilmelidir. Karolann seçimi hakkında oluşabilecek herhangi bir soru veya endişenin dözeme işleminden önce netleşmesi gereklidir.

**V1= AYNI GÖRÜNÜM:** Karodan karoya çok az ve önemsiz farklılıklarla her bir karo aynı doku, renk, ton ve motive sahiptir.

**V2= HAFİF FARKLILIK:** Doku ve/veya desende aynı renkler arasında farklılıklar olabilir. Karolann genel görünüşü oldukça benzerdir.

**V3= ÖNEMLİ FARKLILIK:** Bir karoda bulunan renkler diğer karolardaki renkler hakkında bilgi vermekle birlikte renk yoğunluğunda önemli derecede farklılık gösterir. Karo üzerinde önemsiz gibi görünen bir renk diğer bir karo üzerinde ağırlıklı renk olabilir.

**V4= RASTGELE FARKLILIK:** Bir karo diğer bir karoya göre tamamen farklı renkte olabilir. Renk farklılıklarından dolayı karolarda doğal bir görünüm vardır. Bu yüzden her bir dözeme özgün yapıda olur.

Il peut y avoir des différences de teinte significatives entre des carreaux appartenant à des lots différents ou entre des carreaux d'un même lot de fabrication. Pour déterminer des différences de teinte acceptables, il faut autant que possible passer en revue un certain nombre de carreaux, au moins ceux appartenant à un même lot de fabrication. Toutes les questions ou préoccupations pouvant survenir au sujet de la sélection des carreaux doivent être clarifiées avant la pose.

**V1 = APPARENCE IDENTIQUE :** Les différences d'un carreau à l'autre étant minimes et insignifiantes, chacun des carreaux possède la même texture, teinte, ton et motif.

**V2= LÉGÈRE VARIATION :** Il peut y avoir une différence de texture et/ou de dessin dans la même couleur. Les carreaux sont assez semblables dans l'ensemble.

**V3= VARIATION PRONONCÉE :** Il se peut que les teintes d'un carreau, tout en donnant une idée de celles des autres carreaux, présentent dans leur intensité une différence notable. Ce qui apparaît comme une simple touche de couleur sur un carreau peut être la teinte majeure d'un autre carreau.

**V4=VARIATION ALÉATOIRE :** Il se peut qu'il y ait des carreaux de teintes complètement différentes. Le client ne saurait faire une sélection uniquement parmi quelques exemplaires. Grâce à la diversité de leurs teintes, les carreaux offrent un aspect naturel et permettent de composer chaque fois un carrelage unique en son genre.

#### CTDA FARBTON VARIATIONEN | GUIDE DES VARIATIONS DE TEINTES CTDA

Zwischen Fliesen aus verschiedenen Partien oder aus derselben Produktionspartie treten gewisse Unterschiede in den Farbtönen auf. Um die annehmbaren Farbunterschiede feststellen zu können, sollten zumindest in der gleichen Produktionspartie einige Fliesen soweit möglich miteinander verglichen werden. Mögliche Fragen oder Bedenken bezüglich der auszuwählenden Fliesen sollten vor dem Verlegen geklärt werden.

**V1= GLEICHES AUSSEHEN:** Unterschiede zwischen den Fliesen bezüglich Struktur, Farbe, Farbton und Muster sind minimal.

**V2= LEICHTE UNTERSCHIEDE:** Zwischen der Struktur und/oder dem Muster gleicher Farben können Unterschiede bestehen. Das allgemeine Aussehen der Fliesen ist sehr ähnlich.

**V3= BEDEUTENDE UNTERSCHIEDE:** Die Farben auf einer Fliese geben einen Anhaltspunkt auf die Farben der anderen Fliesen, allerdings können in der Farbtintensität bedeutende Unterschiede auftreten. Eine Farbe, die auf einer Fliese hintergründig vorkommt, kann bei einer anderen im Vordergrund stehen.

**V4= ZUFÄLLIGE UNTERSCHIEDE:** Eine Fliese kann im Vergleich zur anderen eine gänzlich andere Farbe haben. Diese Fliesen können vom Käufer nicht nach ihren Farben ausgesucht werden. Wegen den Farbunterschieden haben die Fliesen ein natürliches Aussehen. Somit wird jedes verlegte Areal anders und besonders.

## NOMINAL AND ACTUAL SIZE | ANMA VE GERÇEK EBATLAR | NOMINALE UND TATSÄCHLICHE MASSE | DIMENSIONS NOMINALES ET RÉELLES

		Nominal Size Anma Ebadi Nominale Maße Dimension nominale (cm)		Working Size Çalışma Ebadi Arbeitsmaße Dimension de travail (mm)	
		Width / En Breadth / Largeur	Length / Boy Länge / Longueur	Width / En Breadth / Largeur	Length / Boy Länge / Longueur
30x60	Matte / Mat / Matt / Mat	30	60	297	596
	Polished / Parlak / Poliirt / Poli	30	60	297	596
	Lapatura / Lapatura / Lapatura / Lappatura	30	60	297	596
60x60	Matte / Mat / Matt / Mat	60	60	596	596
	Polished / Parlak / Poliirt / Poli	60	60	596	596
	Lapatura / Lapatura / Lapatura / Lappatura	60	60	596	596
60x120	Matte / Mat / Matt / Mat	60	120	597	1196
	Polished / Parlak / Poliirt / Poli	60	120	597	1196
	Lapatura / Lapatura / Lapatura / Lappatura	60	120	597	1196
40x80	Matte / Mat / Matt / Mat	40	80	397	797
	Polished / Parlak / Poliirt / Poli	40	80	397	797
	Lapatura / Lapatura / Lapatura / Lappatura	40	80	397	797
80x80	Matte / Mat / Matt / Mat	80	80	797	797
	Polished / Parlak / Poliirt / Poli	80	80	797	797
	Lapatura / Lapatura / Lapatura / Lappatura	80	80	797	797
80x160	Matte / Mat / Matt / Mat	80	160	797	1597
	Polished / Parlak / Poliirt / Poli	80	160	797	1597
	Lapatura / Lapatura / Lapatura / Lappatura	80	160	797	1597
12x120	Matte / Mat / Matt / Mat	12	120	117	1194
	Polished / Parlak / Poliirt / Poli	12	120	117	1194
	Lapatura / Lapatura / Lapatura / Lappatura	12	120	117	1194
20x120	Matte / Mat / Matt / Mat	20	120	197	1194
	Polished / Parlak / Poliirt / Poli	20	120	197	1194
	Lapatura / Lapatura / Lapatura / Lappatura	20	120	197	1194
30x120	Matte / Mat / Matt / Mat	30	120	297	1194
	Polished / Parlak / Poliirt / Poli	30	120	297	1194
	Lapatura / Lapatura / Lapatura / Lappatura	30	120	297	1194



<b>Glazed Granite Tile / Sırlı Granit Karo</b> <b>Glasierte Granitfliesen / Carreau de granit vitré</b>			
<b>Nominal Size</b> Anma Ebadı Nominale Maße Dimension nominale (cm)	<b>Size Code</b> Ebad Kodu Code Dimension Abmessungscode	<b>Working Size</b> Çalışma Ebadı Arbeitsmaße Dimension de travail (W) (mm)	
15x60	Q	147,5	604,4
	P		602,6
	R		600,8
	V		599,0
	Y		597,2
	Z		595,4
15x90	P (2)	147,5	904,0
	R (1)		902,0
	V (0)		900,0
	Y (9)		898,0
	Z (8)		896,0
20x120	R (1)	197,5	1203,0
	V (0)		1201,0
	Y (9)		1199,0
	Z (8)		1197,0
10x30 (M)	A	98,0	298,0
	B	97,0	297,0
	C	96,0	296,0
17,5x20	-	173,0	200,0
17,5x60	-	173,0	600,0
33x38	-	330,0	381,0
30x60	P	299,4 (±0,6)	602,0
	R		600,5
	V	297,0 (±1,0)	599,0
	Y		597,5
	Z		596,0
60x60	P	601,6	601,6
	R	600,3	600,3
	V	599,0	599,0
	Y	597,7	597,7
	Z	596,4	596,4
59x59 R	-	590,0	590,0
45x45	P	450,9	450,9
	R	449,7	449,7
	V	448,5	448,5
	Y	447,3	447,3
44x44 R	Z	446,1	446,1
	-	440,0	440,0

<b>Wall Tile / Duvar Karosu / Wandfliese / Carreaux de mur</b>		
<b>Nominal Size / Anma Ebatı</b> Nominale Maße / Dimension nominale (cm)	<b>Working Size / Çalışma Ebatı</b> Arbeitsmaße / Dimension de travail ( W ) (mm)	
	30x90 R	295,0
30x60 R	299,4	602,0
	299,4	600,5
	297,0	599,0
	297,0	597,5
	297,0	596,0



kale.com.tr

 **Kale**

**Kaleseramik Çanakkale Kalebodur Seramik San. A.Ş.**

Büyükdere Cad. Kaleseramik Binası 34330 Levent - İstanbul / Türkiye

T +90 212 371 5253 (pbx) F +90 212 278 4396

customerservices@kale.com.tr